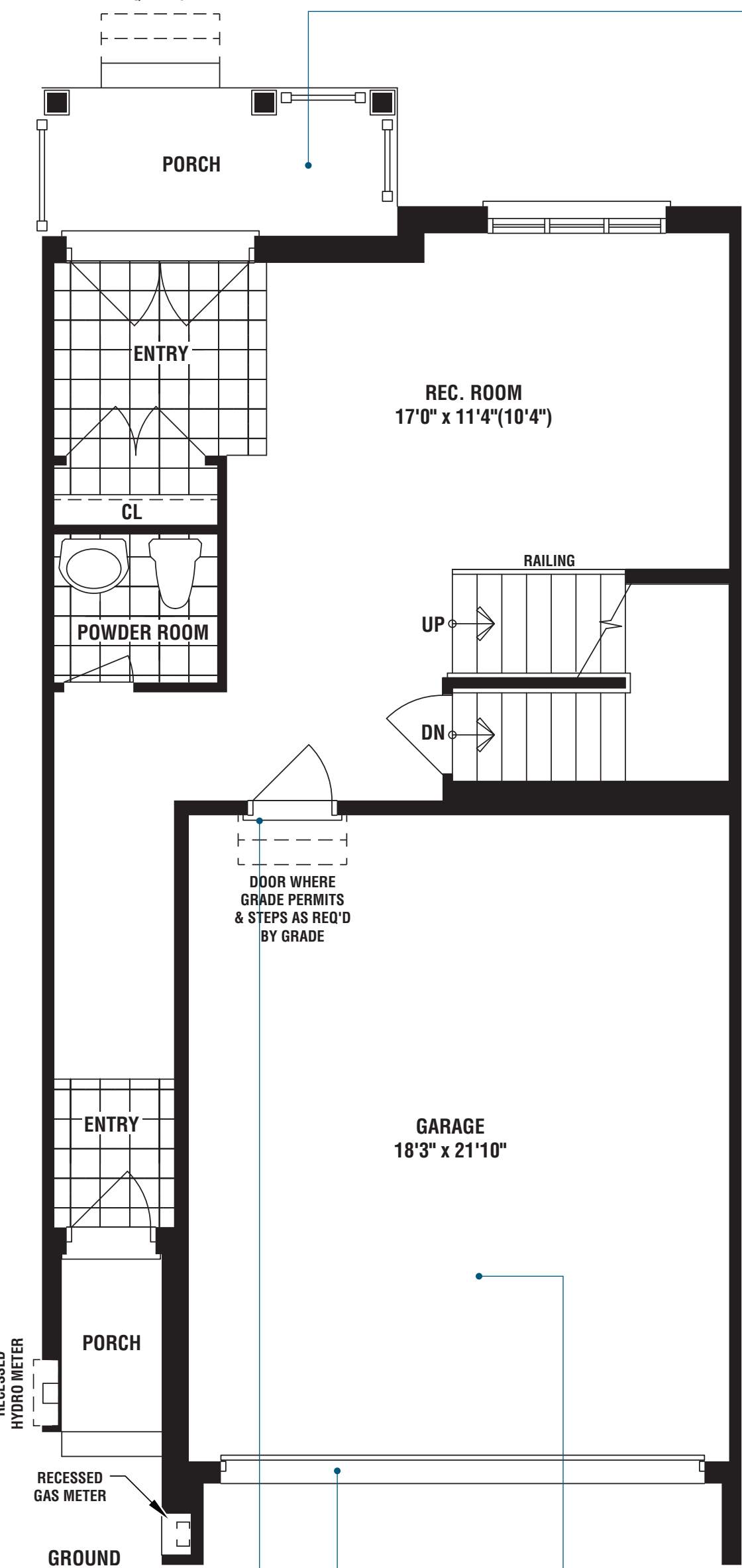


CARNWITH

2227 SQ FT
2510 SQ FT WITH OPTIONAL FINISHED BASEMENT

A covered porch and a grand double doorway make for an inviting entrance to your home



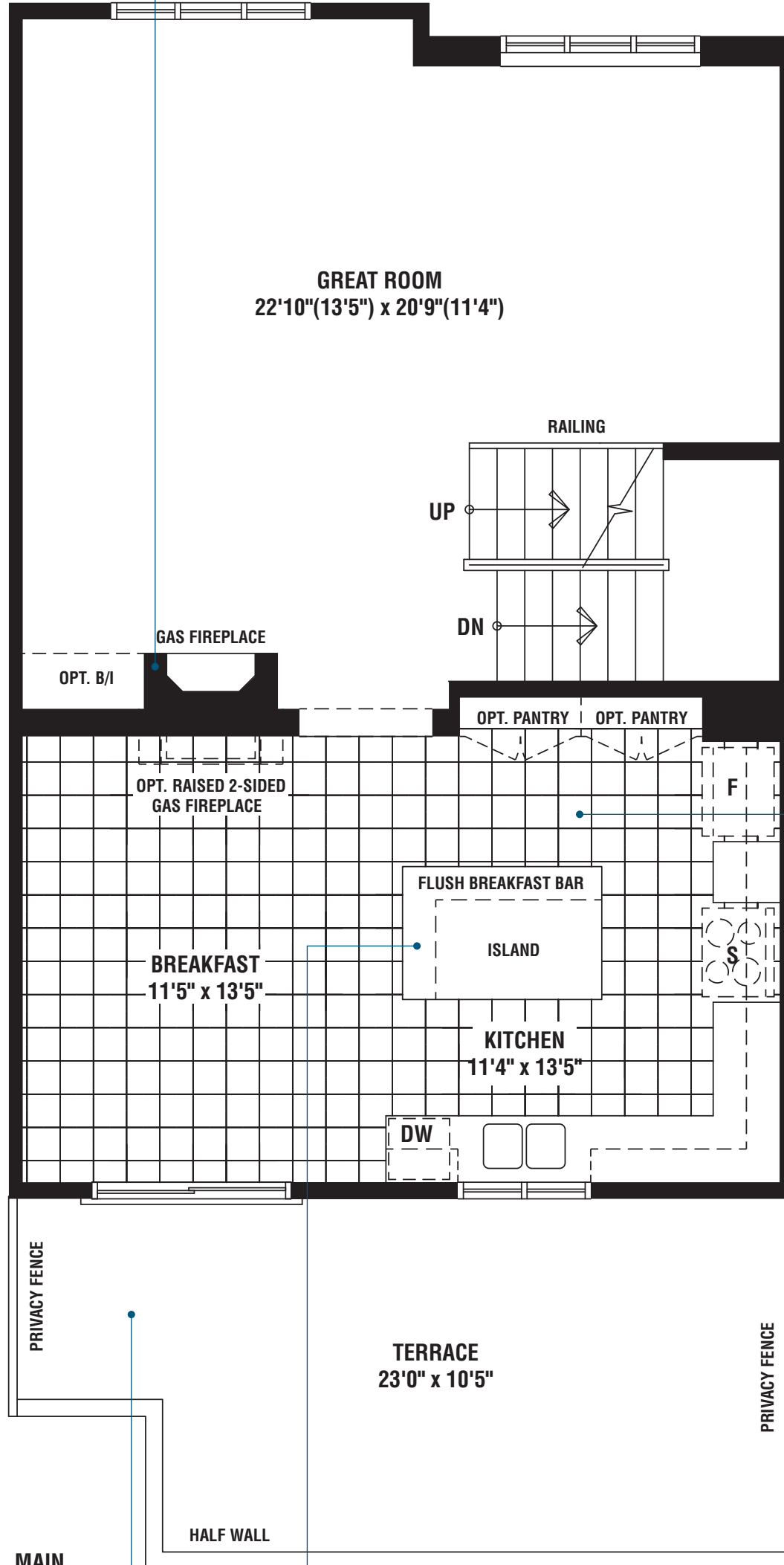
A door from your garage to your home provides convenient access

Easy access to your home from a rear laneway

A covered porch and a grand double doorway make for an inviting entrance to your home

You'll love spending quality family time in this home's open-concept main area which features a beautiful gourmet kitchen with an oversized island and ample storage space

On chilly winter evenings, snuggle up with loved ones by the warming gas fireplace



The flush breakfast bar is the perfect place to enjoy the most important meal of the day

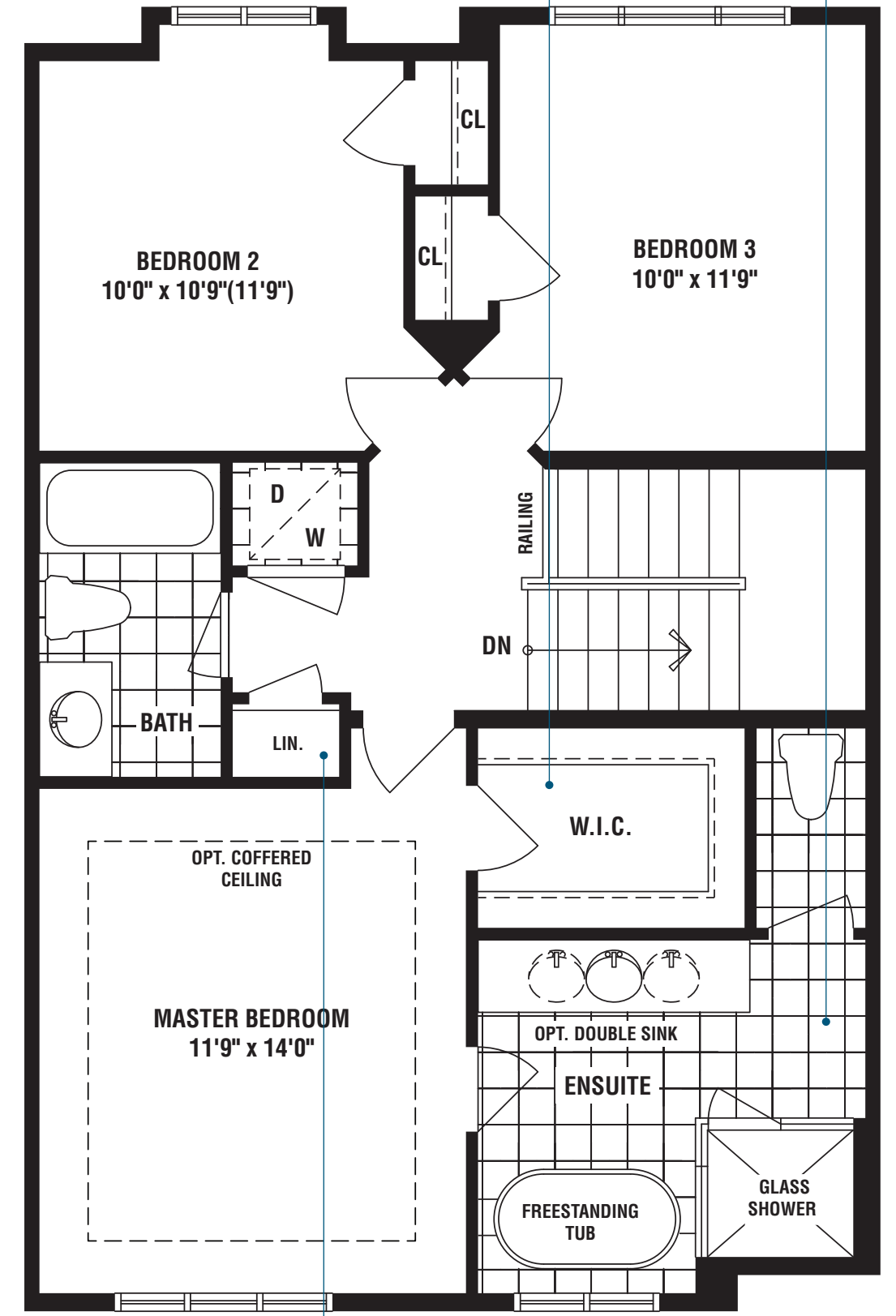
An unfinished basement gives you the opportunity to add an entertainment or media room

A double-car garage allows for a safe haven from the elements all year long

Huge terraces are perfect for time spent with family soaking up the sun

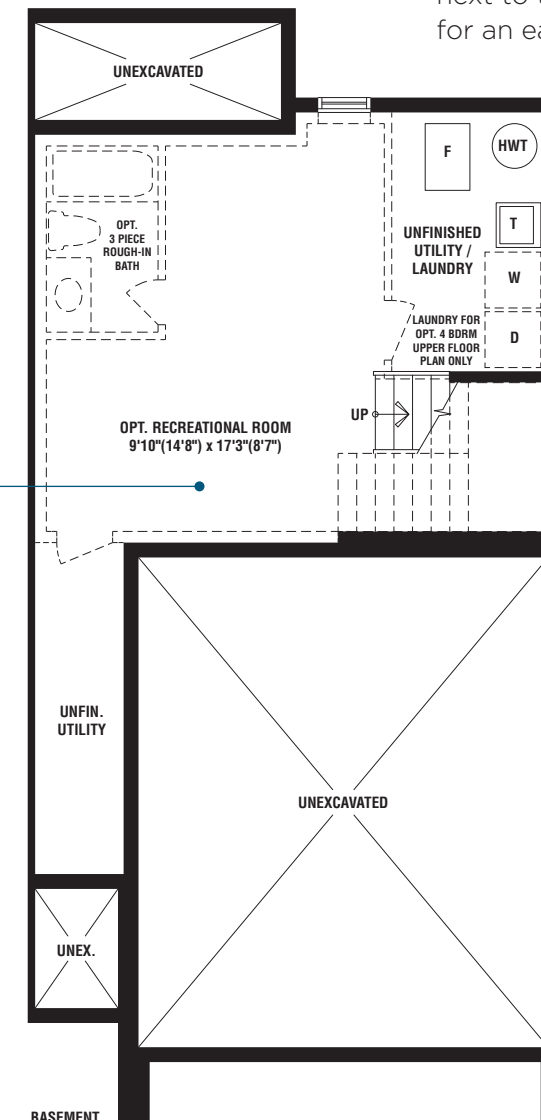
Relax in the gorgeous spa-like ensuite with freestanding tub, glass shower and private water closet

An expansive walk-in closet gives you plenty of space for your all-season wardrobe

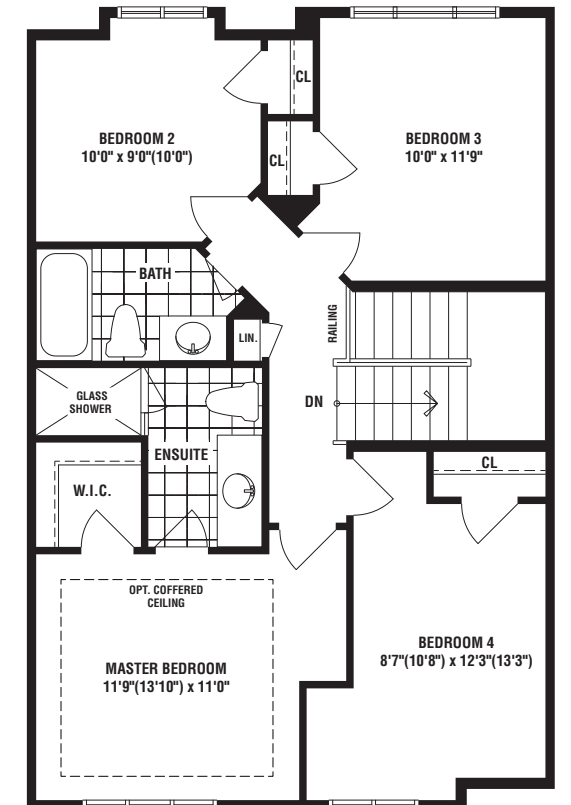


UPPER

Find the linen closet next to the laundry room for an easy storage option



BASEMENT



OPTIONAL UPPER W/ 4 BEDROOMS

Choose an optional 4-bedroom plan to cater to your growing family