

ELEVATION A

A beautiful two-storey home, with the garage set back, maximizes light into the living/dining areas. The hard paved area provides a place for kids to play that is visible from the kitchen.

This elevation offers a balcony off the front bedroom providing a spacious outdoor retreat.

Four Bedrooms
3,136 sf
with optional finished lower level
3,943 sf



ELEVATION B

Has all the great designed for you features of Elevation A with an alternate streetscape design.

Four Bedrooms
3,136 sf
with optional finished lower level
3,943 sf



ELEVATION C

Has all the great designed for you features of Elevation A with all brick facade and a Juliet balcony.

Four Bedrooms
3,136 sf
with optional finished lower level
3,943 sf



Renderings are an artists impression. All sizes and specifications are subject to change without any notice. E.&O.E.

SORBARA

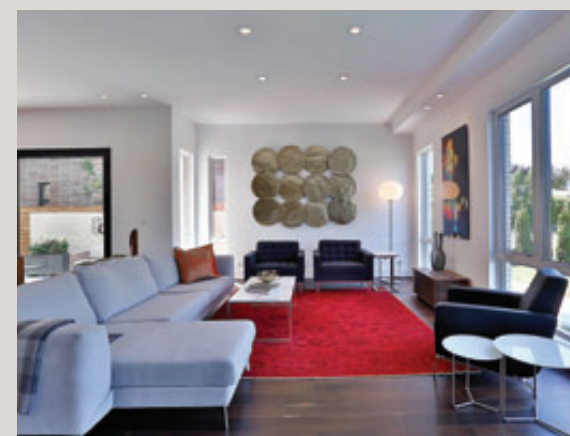
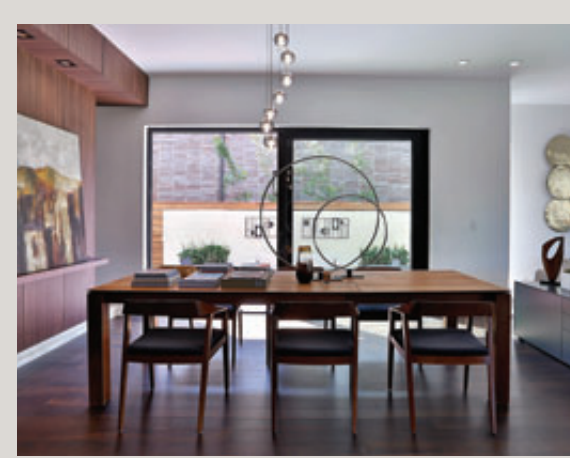
— group of companies —

Sorbara is a family-owned development and construction company focused on designing and constructing distinctive communities that help cultivate the aesthetic landscape of the neighbourhoods within which people live, work and play. Over six decades of building environments for families, individuals, companies and institutions has taught Sorbara that attention to detail in how people live is the most important element of design.

With this commitment to design excellence, Sorbara created home designs unique to Treetops. Generous outdoor living areas nurture a strong connection to nature. Mudrooms directly off the garage make it so that sports equipment can be contained away from the rest of the house. Optional airlocked foyers maximize energy efficiency and interior comfort. From distinctive elevation options to customizable features on all floor plans, every Sorbara home is different, specifically suited to the individual homeowner, but always built with a consistent dedication to quality.

The best testament to our community commitment is evident in our built form. A drive through both completed and projects under construction showcases Sorbara's commitment to our homeowners.

Sorbara.com



45FT COLLECTION

The River Maple 2

Four Bedroom home with a porte cochere.
from 3,136 sf
with optional Finished Lower Level from 3,943 sf