



ELEVATION B



ELEVATION A

ELEV A 2446 SQ. FT. | WITH OPT. FINISHED BASEMENT 3061 SQ. FT.  
 ELEV B 2450 SQ. FT. | WITH OPT. FINISHED BASEMENT 3065 SQ. FT.

# GRANDVIEW

36'  
singles



STORYBROOK  
IN THE TOWN OF FERGUS

## GRANDVIEW

ELEV A 2446 SQ. FT.  
 WITH OPT. FINISHED BASEMENT 3061 SQ. FT.  
 ELEV B 2450 SQ. FT.  
 WITH OPT. FINISHED BASEMENT 3065 SQ. FT.

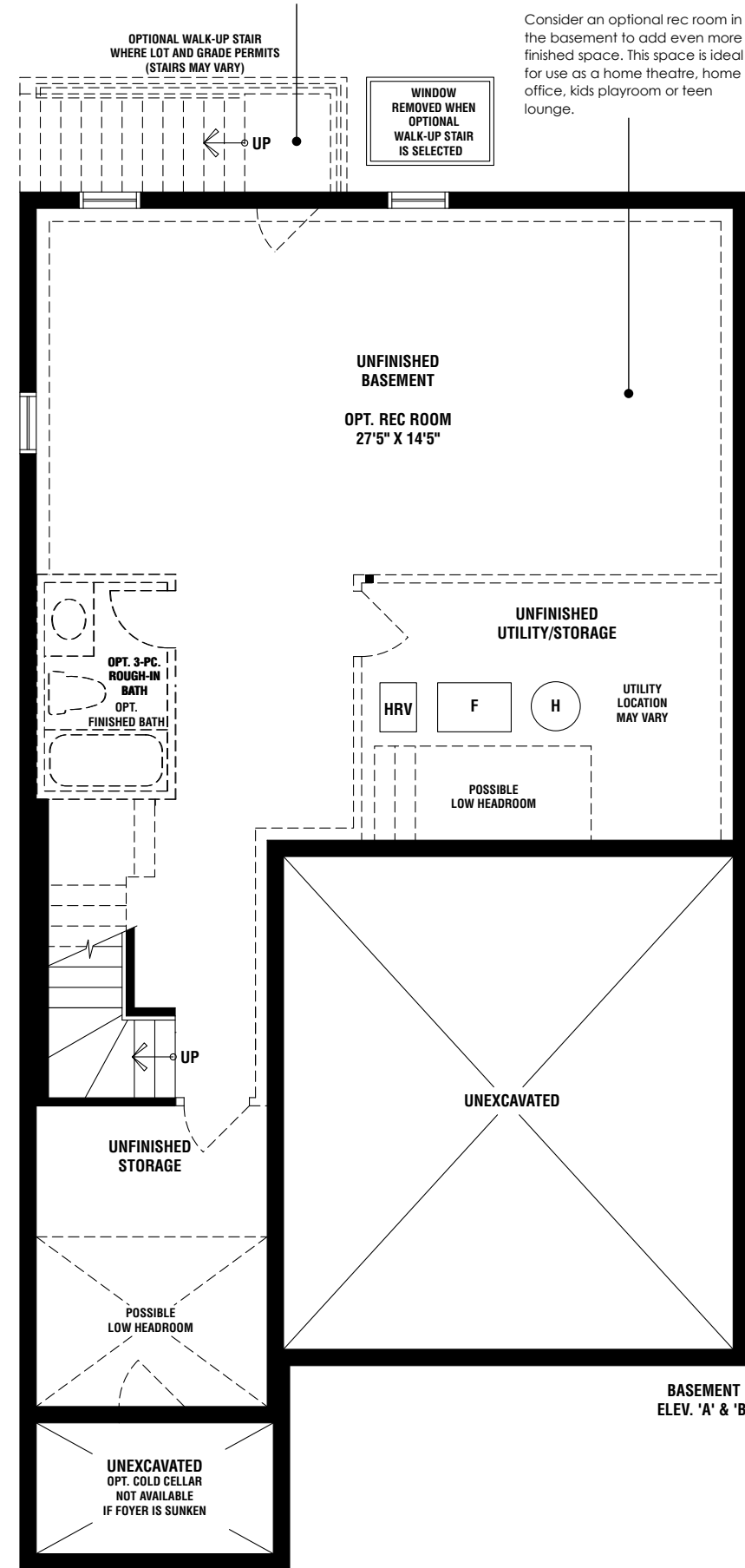
SORBARA  
group of companies



# GRANDVIEW

ELEV A 2446 SQ. FT.  
WITH OPT. FINISHED BASEMENT 3061 SQ. FT.  
ELEV B 2450 SQ. FT.  
WITH OPT. FINISHED BASEMENT 3065 SQ. FT.

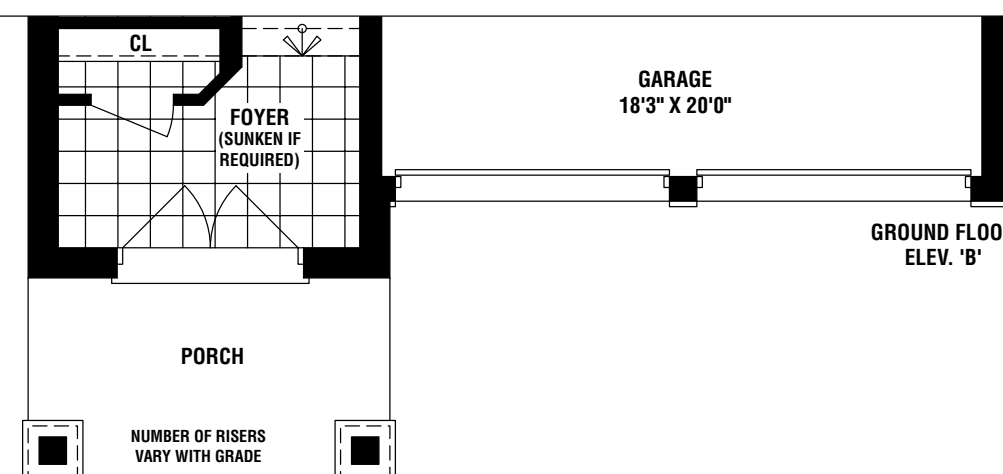
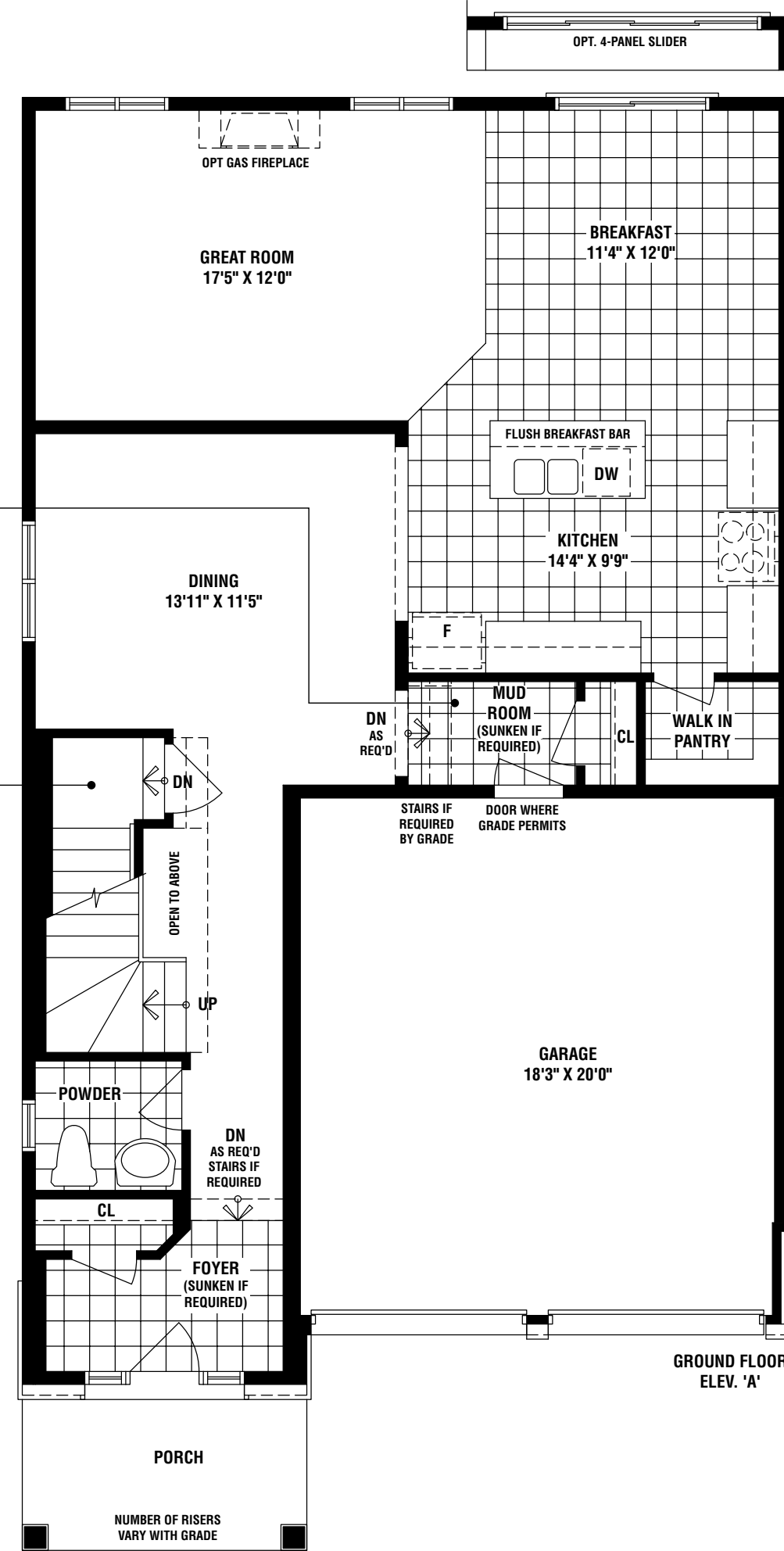
This home features the option for a walk-up staircase that provides private access to the basement from the backyard.



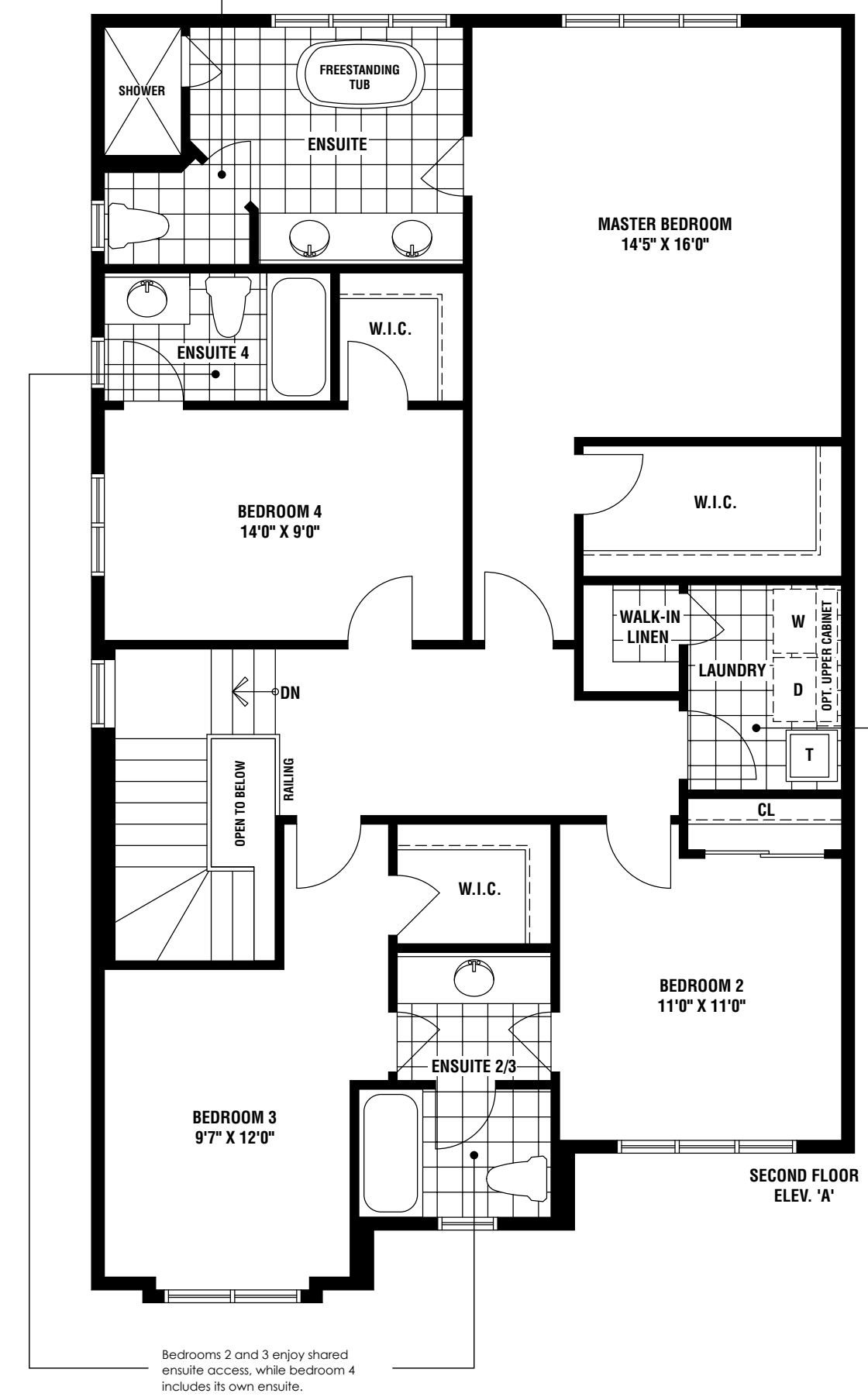
Consider an optional rec room in the basement to add even more finished space. This space is ideal for use as a home theatre, home office, kids playroom or teen lounge.

A mudroom provides direct access to the garage. It's perfect for storing seasonal clothing or cleaning off the dog after a long walk.

Move around your space with ease—the central staircase in the heart of the home creates a sense of connectivity across all floors.



The large master suite includes an oversized walk-in closet. It's spa-like ensuite includes a private water closet, freestanding soaker tub, and dual sinks.



The convenient upstairs laundry room includes a walk-in linen closet for added storage.

