



ELEVATION B



ELEVATION A

ELEV A 2989 SQ. FT. | WITH OPT. FINISHED BASEMENT 3904 SQ. FT.
 ELEV B 2998 SQ. FT. | WITH OPT. FINISHED BASEMENT 3913 SQ. FT.

BRAESIDE

36'
singles



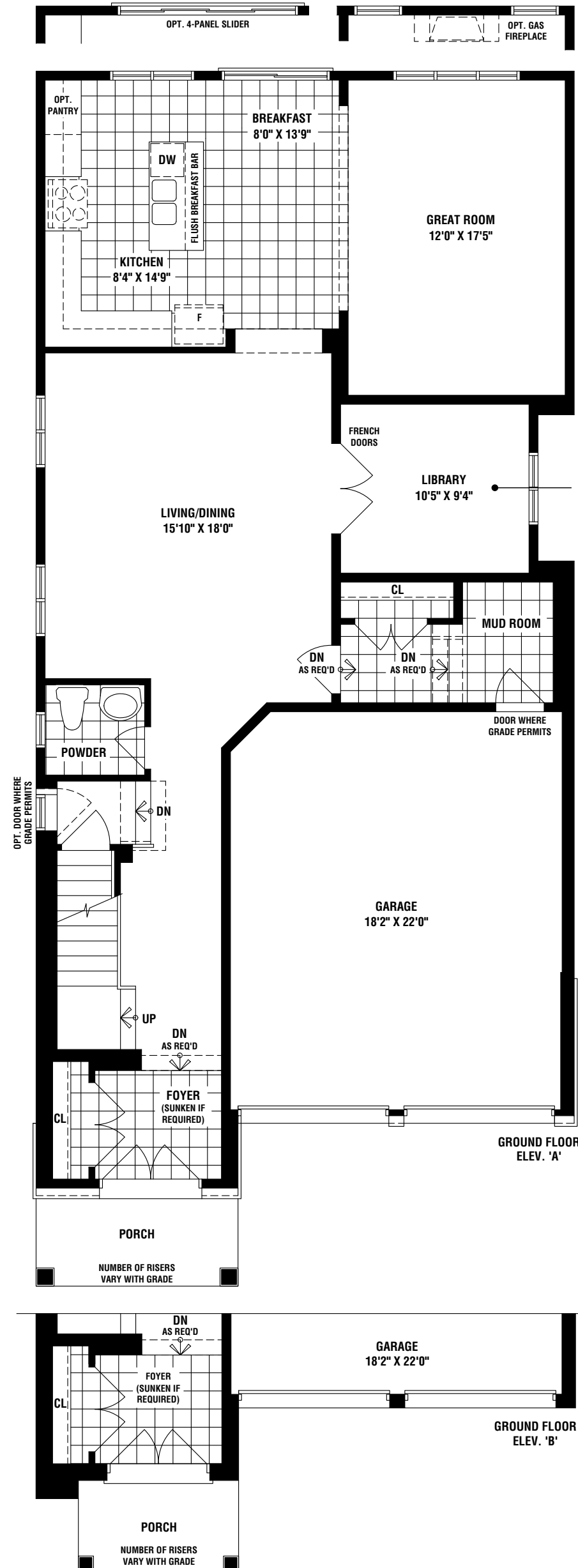
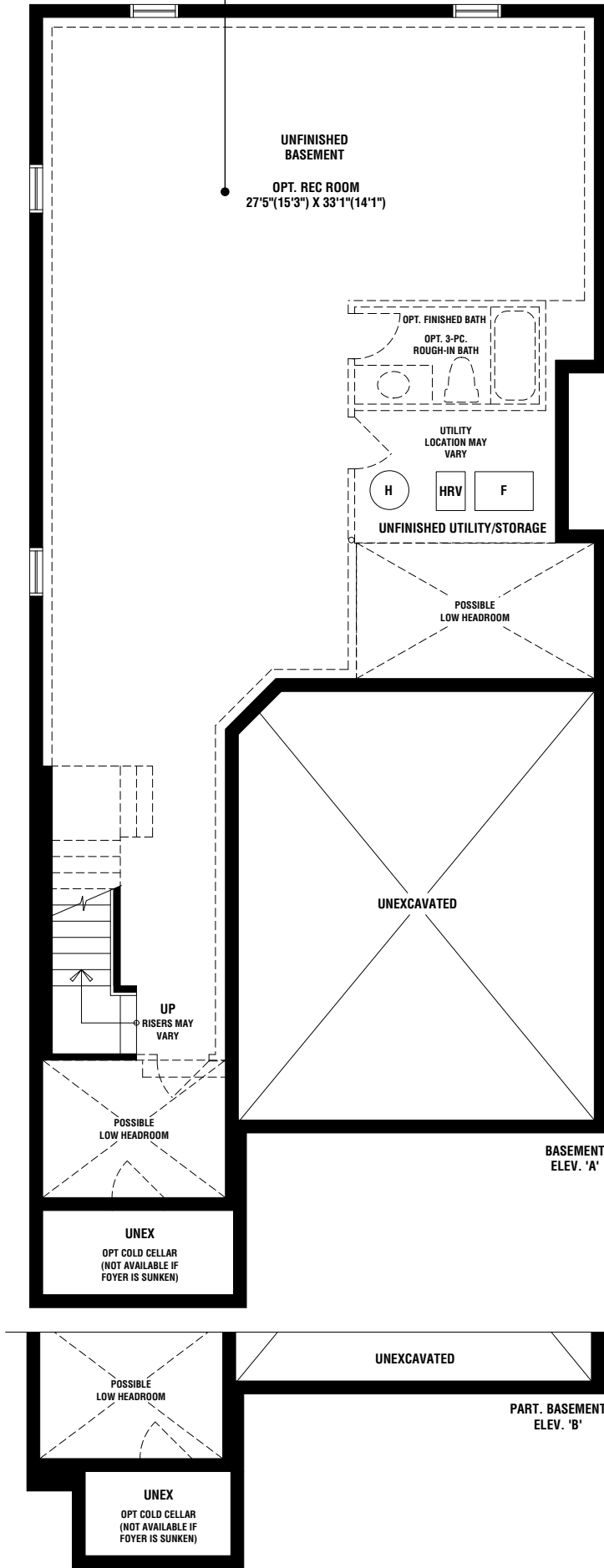
BRAESIDE

ELEV A 2989 SQ. FT.
 WITH OPT. FINISHED BASEMENT 3904 SQ. FT.
 ELEV B 2998 SQ. FT.
 WITH OPT. FINISHED BASEMENT 3913 SQ. FT.

BRAESIDE

ELEV. A 2989 SQ. FT.
WITH OPT. FINISHED BASEMENT 3904 SQ. FT.
ELEV. B 2998 SQ. FT.
WITH OPT. FINISHED BASEMENT 3913 SQ. FT.

Consider an optional rec room in the basement to add even more finished space. This space is ideal for use as a home theatre, home office, kids playroom or teen lounge.

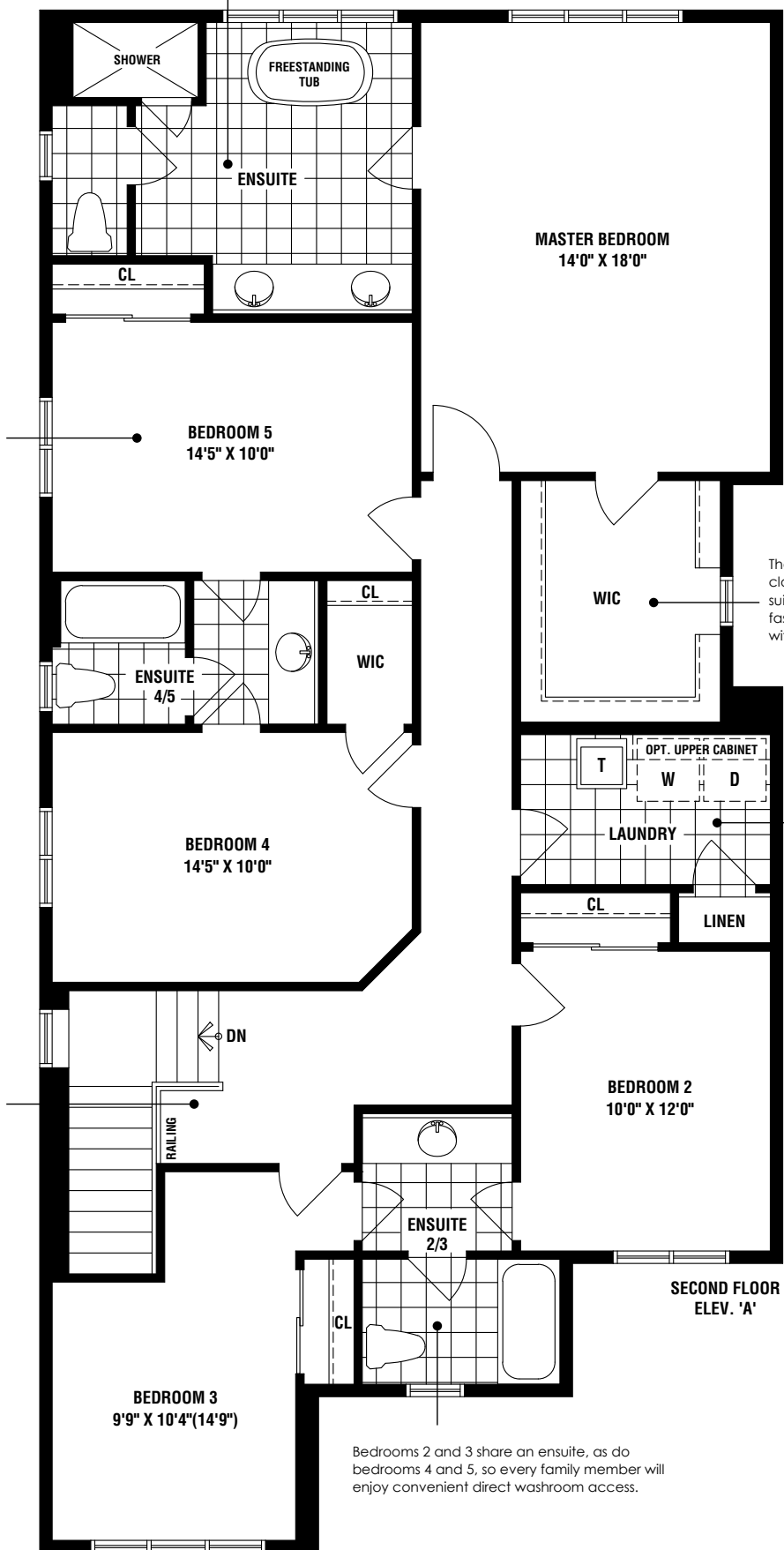


Enjoy a refreshing sense of luxury in the master ensuite, which features a private water closet, dual sinks, freestanding tub and shower.

This 5 bedroom home is perfect for larger families, or anyone who wants more flex space for use as a fitness studio, media room, home office or guest room.

A main floor library with charming French Doors and natural light is the ultimate home office or homework room.

A flex space at the top of the stairs serves as the ideal homework/computer nook.



The oversized walk-in closet in the master suite is a true fashion-lovers' dream with natural light.

Your upstairs laundry room with tub makes it easy to stay on top of household chores.

