



**ELEVATION A**  
 1825 SQ. FT.  
 ADD 495 SQ. FT. FOR  
 OPTIONAL FINISHED BASEMENT



**ELEVATION B**  
 1827 SQ. FT.  
 ADD 495 SQ. FT. FOR  
 OPTIONAL FINISHED BASEMENT

ALL AREAS AND STATED ROOM DIMENSIONS ARE APPROXIMATE. SIZES AND SPECIFICATIONS ARE SUBJECT TO CHANGE WITHOUT NOTICE. ACTUAL USABLE FLOOR AREA MAY VARY FROM STATED FLOOR AREA. ALL RENDERINGS AND HOME SITINGS ARE ARTIST'S IMPRESSIONS. E. & O. E. 32-2



**trailways**  
 STOUFFVILLE

**THE BAYBERRY**  
 32' COLLECTION

<b>ELEVATION A</b>	<b>ELEVATION B</b>
1825 SQ. FT.	1827 SQ. FT.
ADD 495 SQ. FT. FOR OPTIONAL FINISHED BASEMENT	ADD 495 SQ. FT. FOR OPTIONAL FINISHED BASEMENT



**ELEVATION A**

1825 SQ. FT.

ADD 495 SQ. FT. FOR

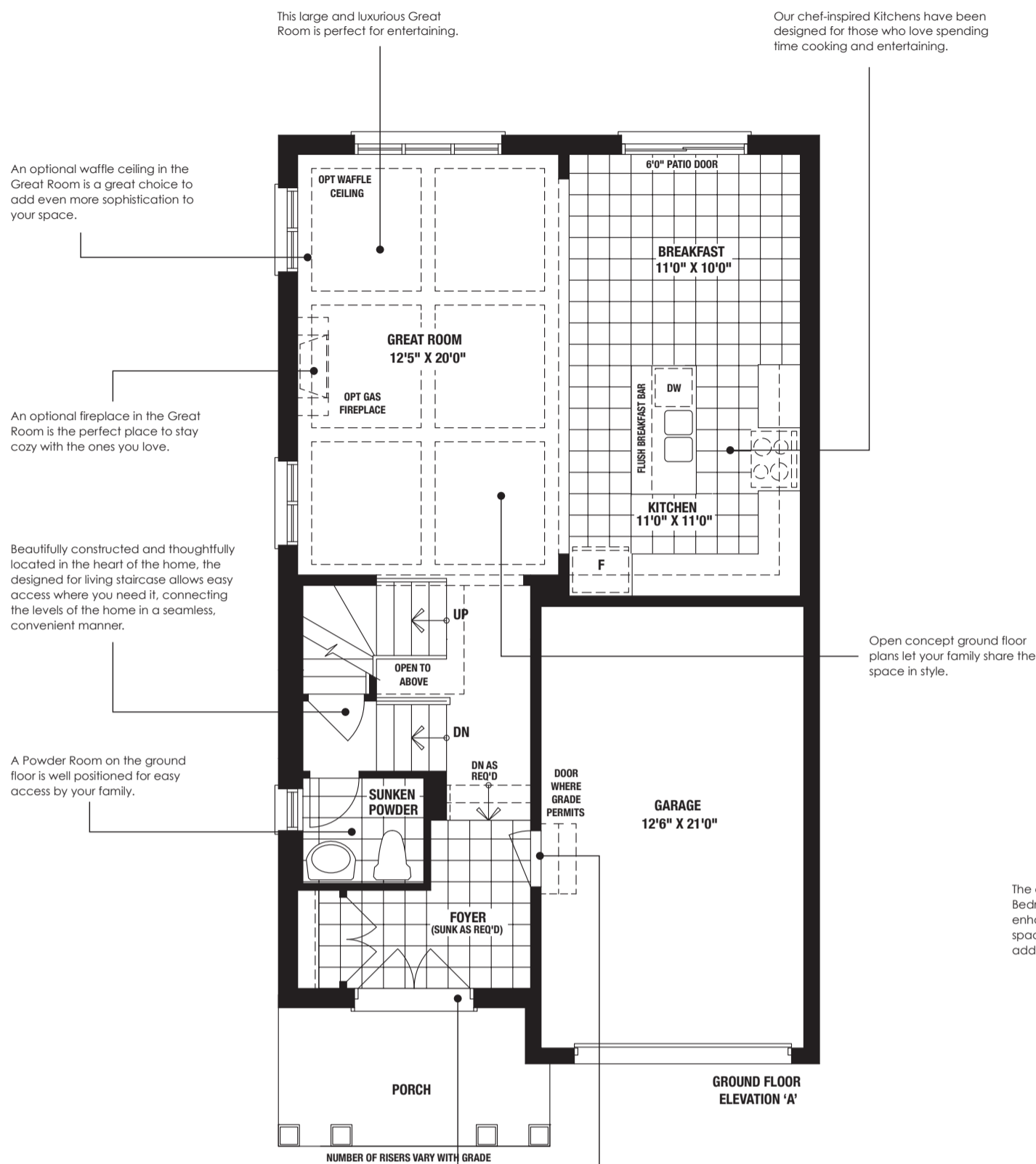
OPTIONAL FINISHED BASEMENT

**ELEVATION B**

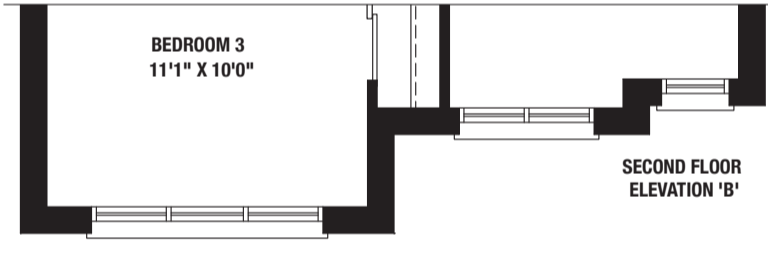
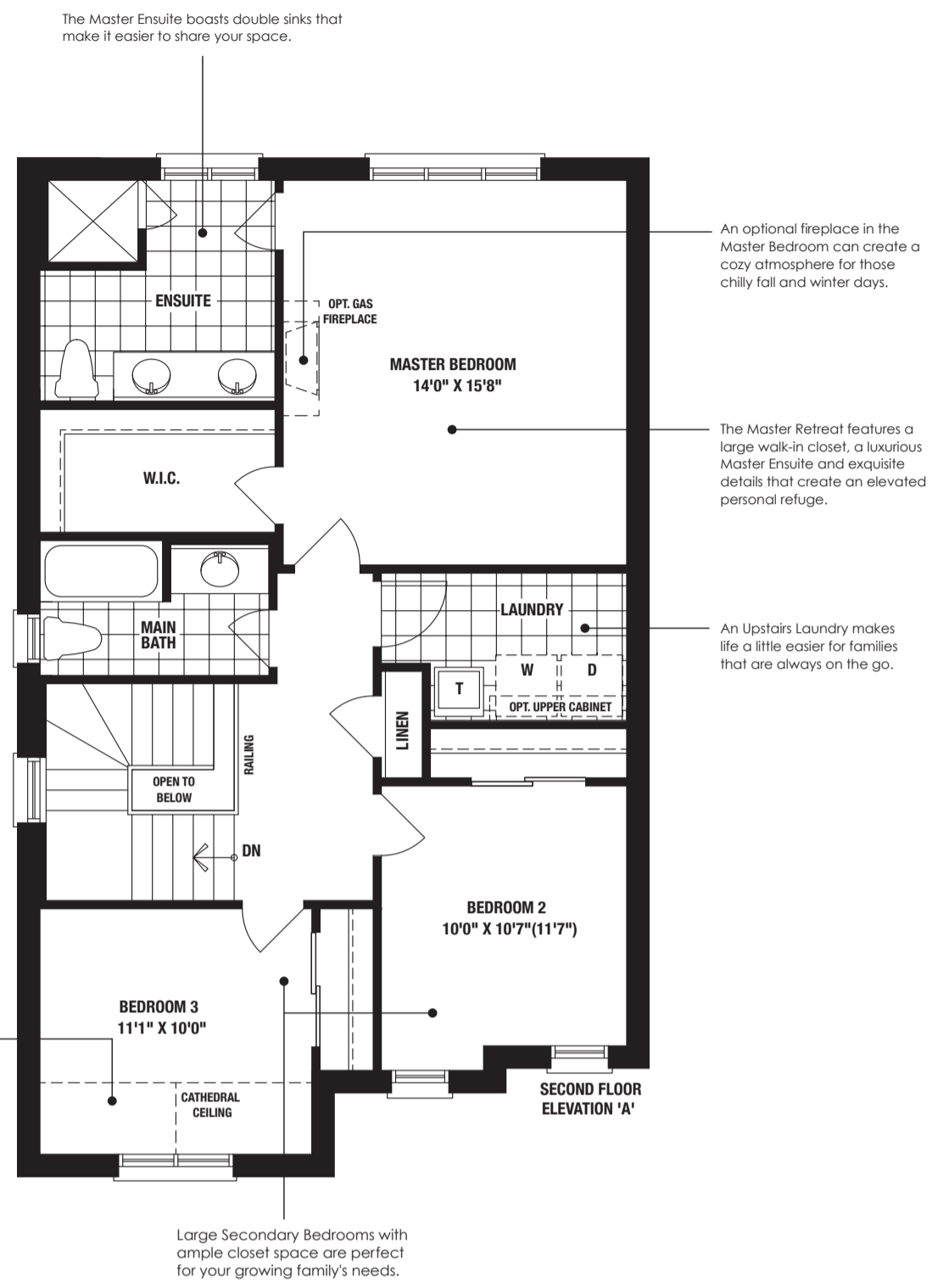
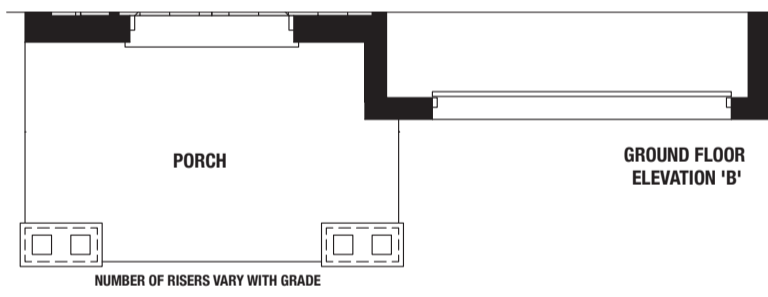
1827 SQ. FT.

ADD 495 SQ. FT. FOR

OPTIONAL FINISHED BASEMENT



A grand front entry with double doors and a large porch creates the perfect point of introduction to your family home.



An optional Finished Basement offers the additional space to add luxurious home amenities such as a wine cellar or recreation/exercise room. It is also ideal for storage or an extra bathroom.

