



**ELEVATION A**  
 2025 SQ. FT.  
 ADD 584 SQ. FT. FOR  
 OPTIONAL FINISHED BASEMENT



**ELEVATION B**  
 2044 SQ. FT.  
 ADD 584 SQ. FT. FOR  
 OPTIONAL FINISHED BASEMENT

ALL AREAS AND STATED ROOM DIMENSIONS ARE APPROXIMATE. SIZES AND SPECIFICATIONS ARE SUBJECT TO CHANGE WITHOUT NOTICE. ACTUAL USABLE FLOOR AREA MAY VARY FROM STATED FLOOR AREA. ALL RENDERINGS AND HOME SITINGS ARE ARTIST'S IMPRESSIONS. E. & O. E. 323



**trailways**  
 STOUFFVILLE

**THE CEDAR**  
 32' COLLECTION

<b>ELEVATION A</b>	<b>ELEVATION B</b>
2025 SQ. FT.	2044 SQ. FT.
ADD 584 SQ. FT. FOR	ADD 584 SQ. FT. FOR
OPTIONAL FINISHED BASEMENT	OPTIONAL FINISHED BASEMENT





**ELEVATION A**

2025 SQ. FT.

ADD 584 SQ. FT. FOR

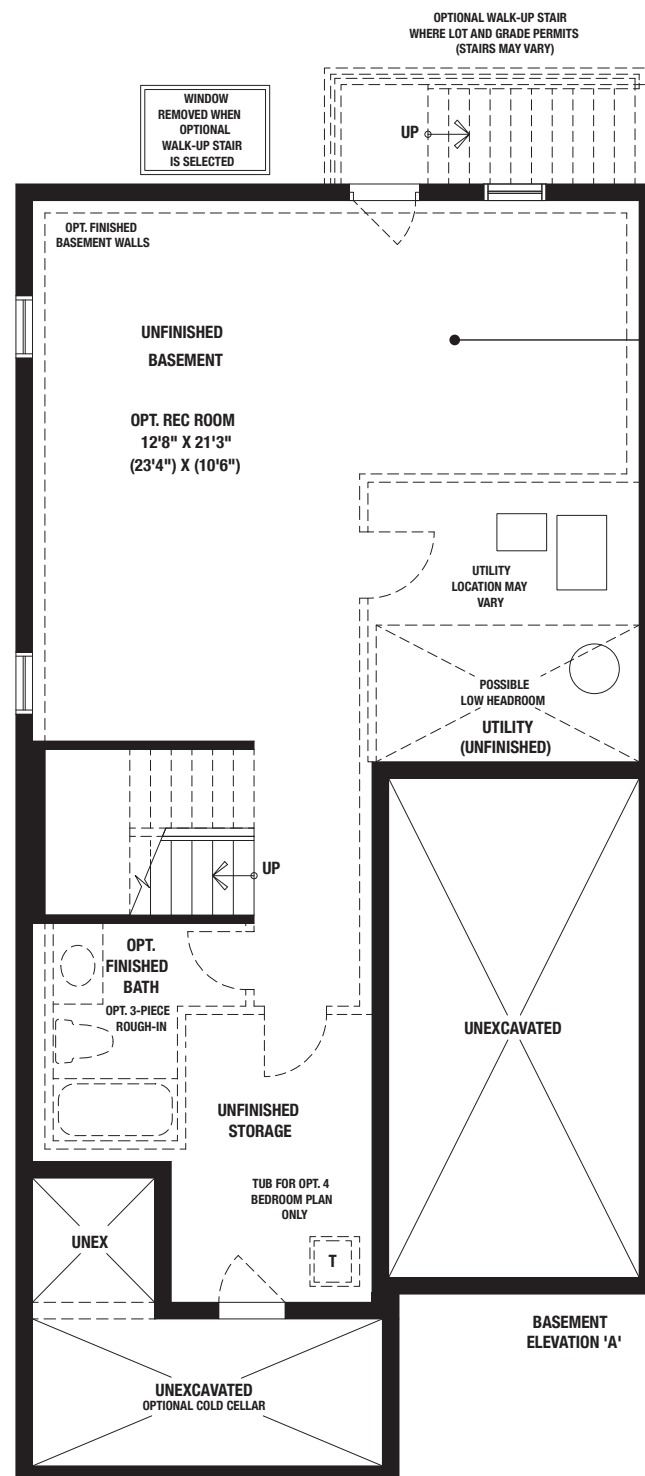
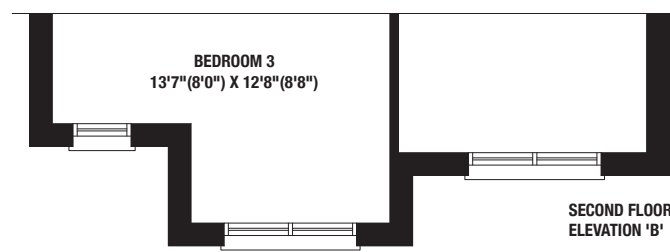
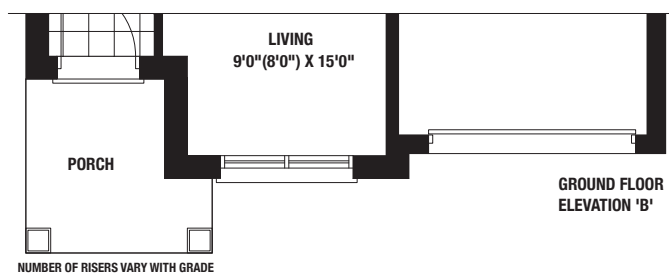
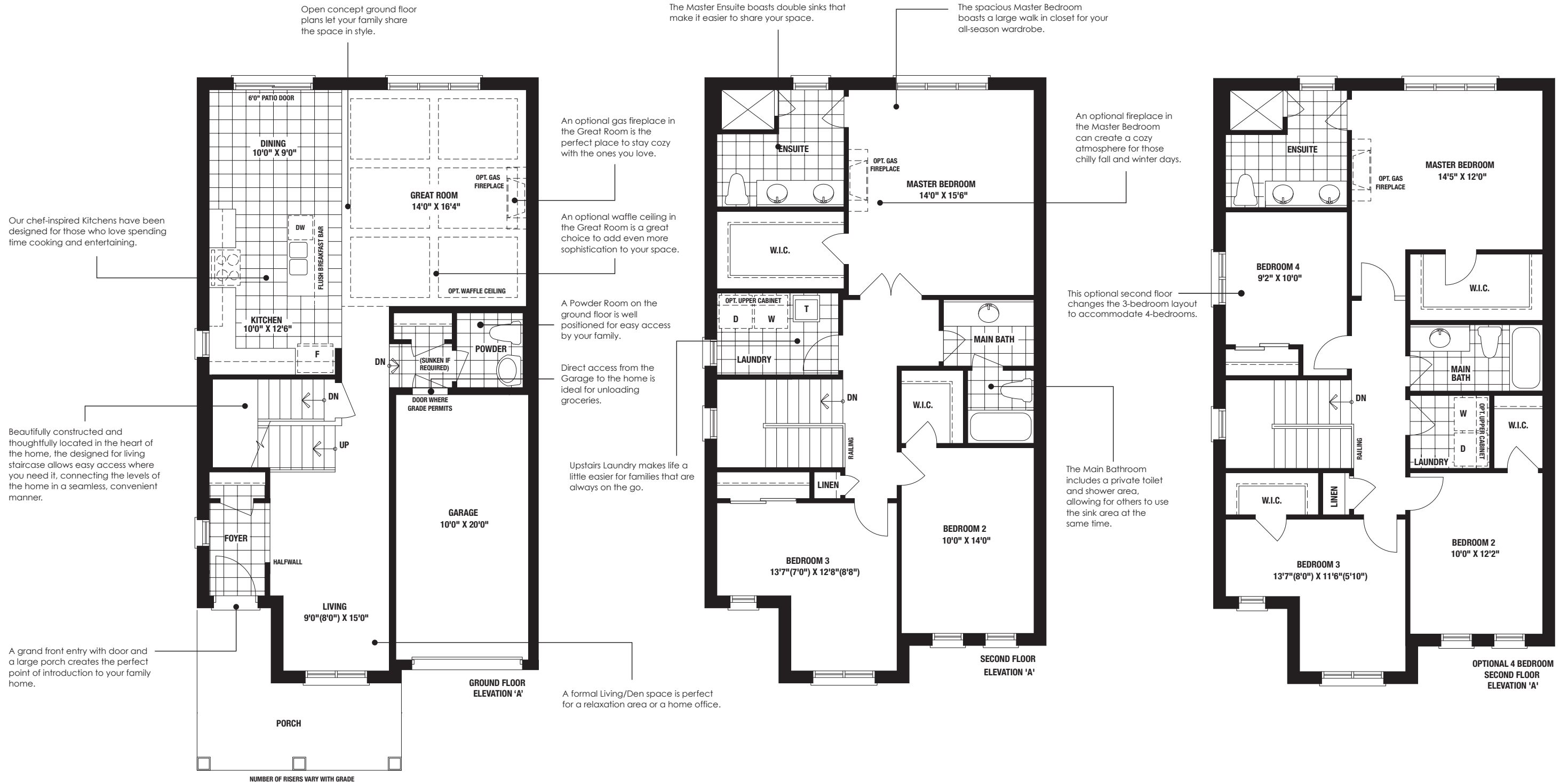
OPTIONAL FINISHED BASEMENT

**ELEVATION B**

2044 SQ. FT.

ADD 584 SQ. FT. FOR

OPTIONAL FINISHED BASEMENT



An optional Finished Basement offers the additional space to add luxurious home amenities such as a wine cellar or recreation/exercise room. It is also ideal for storage or an extra bathroom.

