



ELEVATION A
 2295 SQ. FT.
 ADD 678 SQ. FT. FOR
 OPTIONAL FINISHED BASEMENT

ELEVATION B
 2275 SQ. FT.
 ADD 690 SQ. FT. FOR
 OPTIONAL FINISHED BASEMENT

ALL AREAS AND STATED ROOM DIMENSIONS ARE APPROXIMATE. SIZES AND SPECIFICATIONS ARE SUBJECT TO CHANGE WITHOUT NOTICE. ACTUAL USABLE FLOOR AREA MAY VARY FROM STATED FLOOR AREA. ALL RENDERINGS AND HOME SITINGS ARE ARTIST'S IMPRESSIONS. E. & O. E. 32-SC



trailways
 STOUFFVILLE

THE ELM
 32' COLLECTION

| | |
|----------------------------|----------------------------|
| ELEVATION A | ELEVATION B |
| 2295 SQ. FT. | 2275 SQ. FT. |
| ADD 678 SQ. FT. FOR | ADD 690 SQ. FT. FOR |
| OPTIONAL FINISHED BASEMENT | OPTIONAL FINISHED BASEMENT |



ELEVATION A

2295 SQ. FT.

ADD 678 SQ. FT. FOR

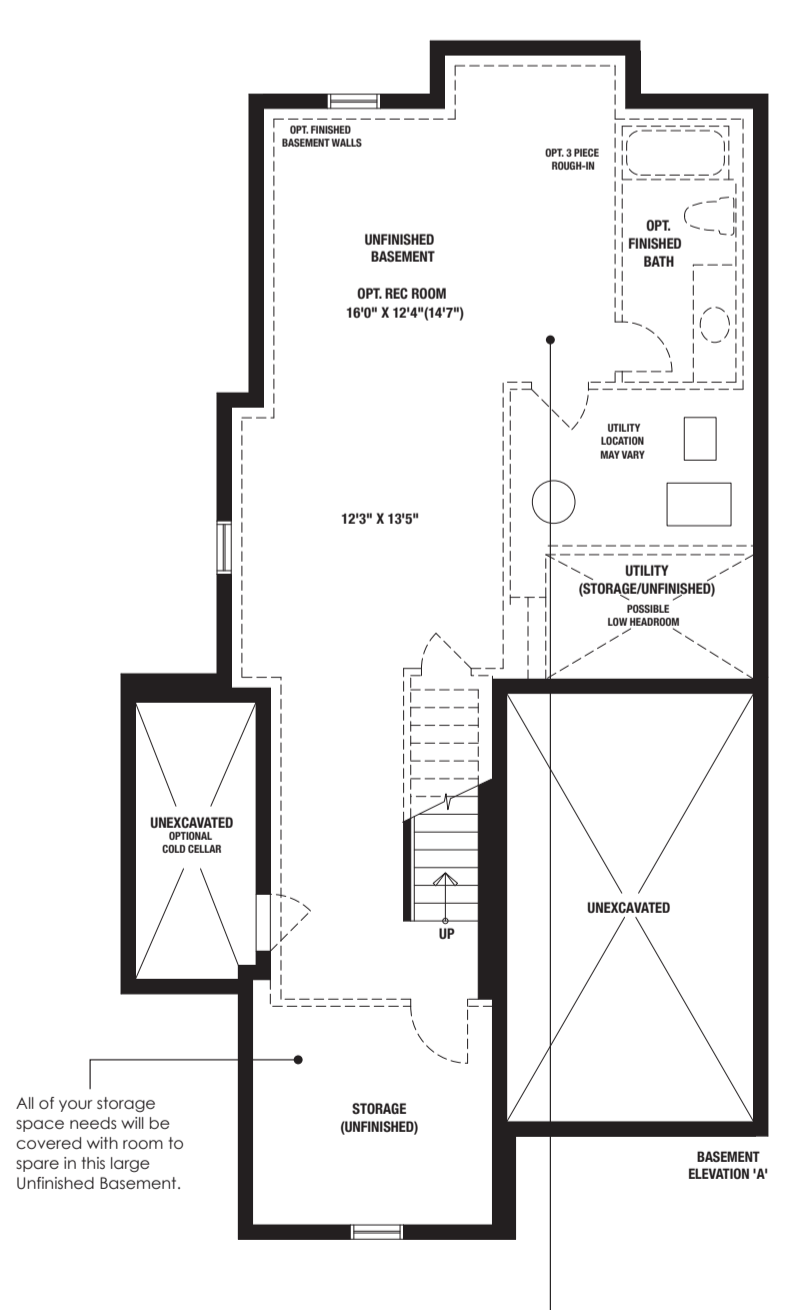
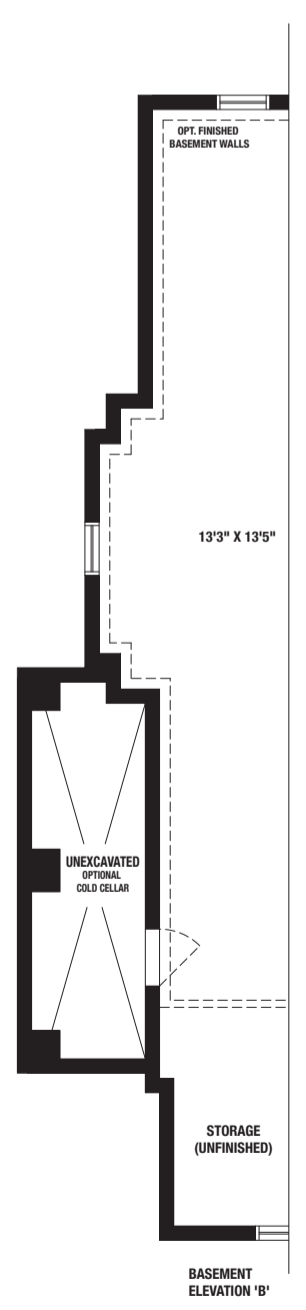
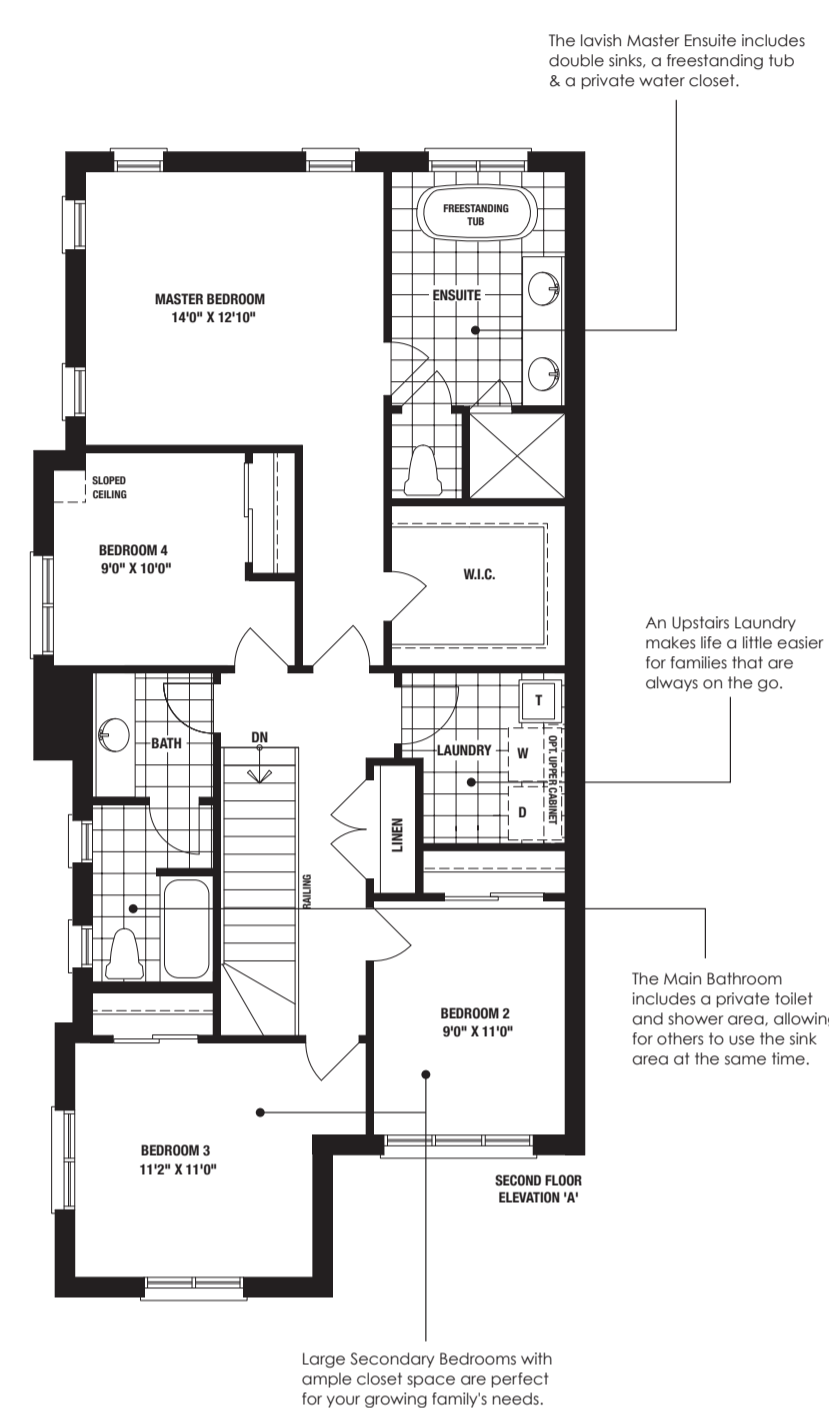
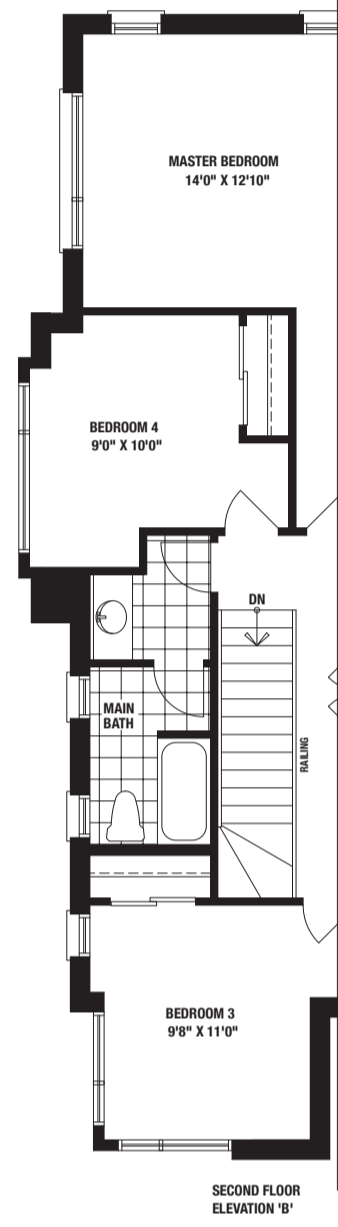
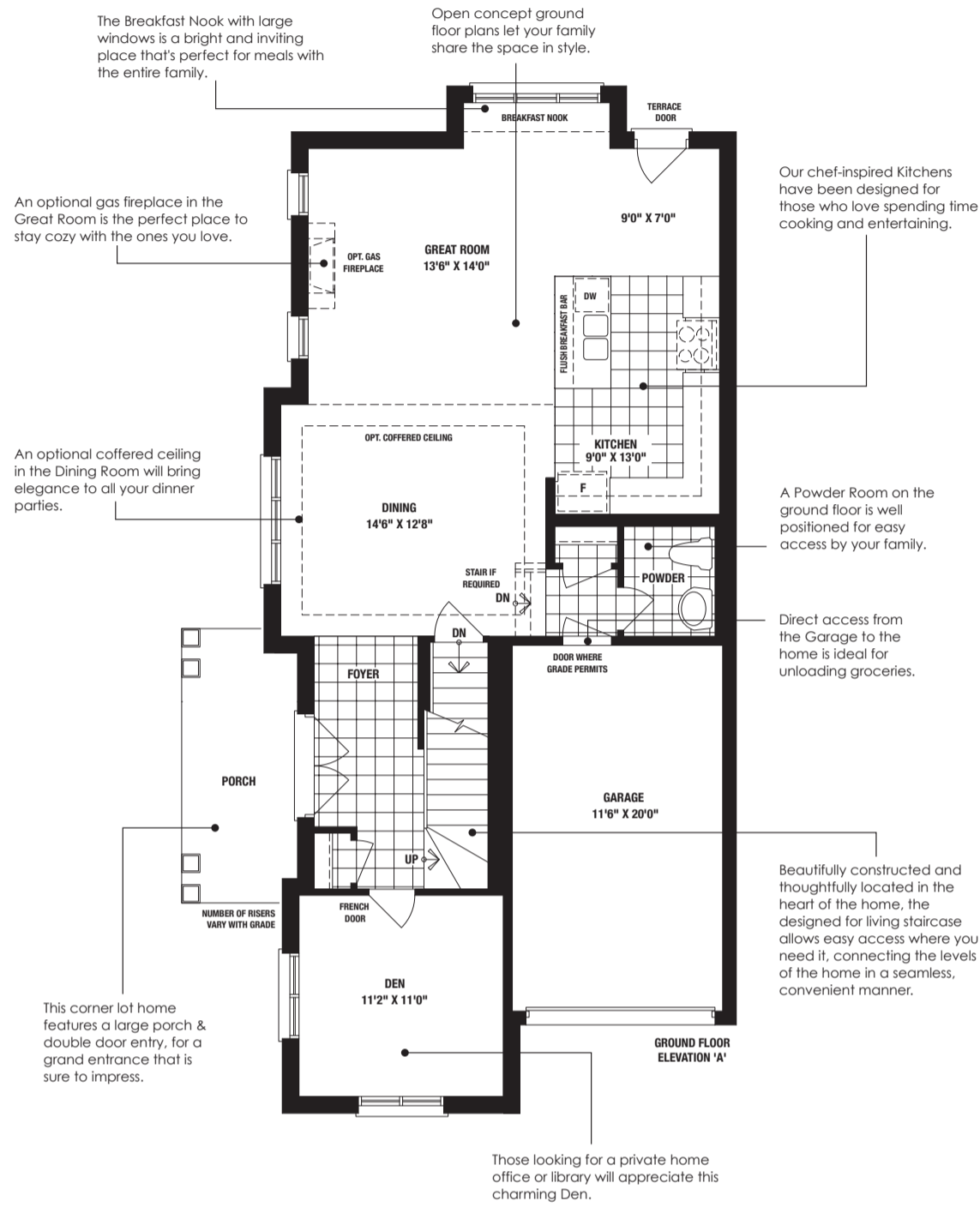
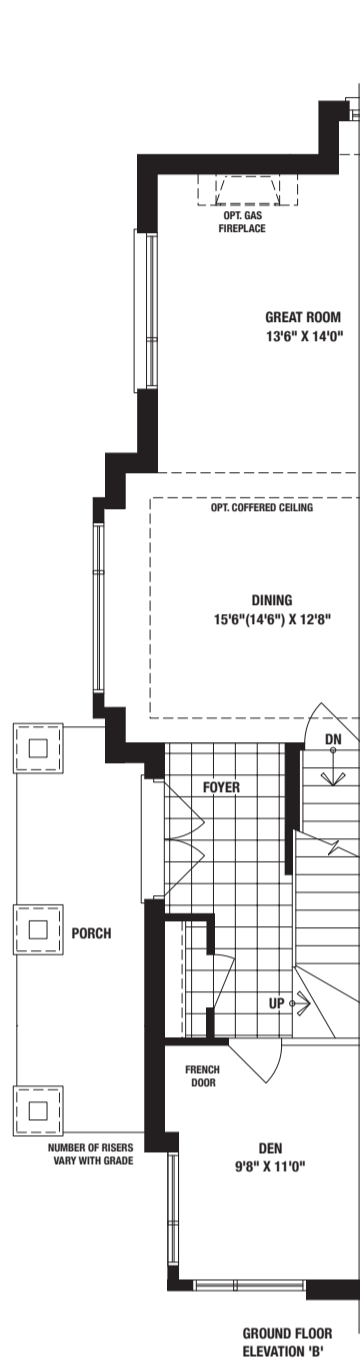
OPTIONAL FINISHED BASEMENT

ELEVATION B

2275 SQ. FT.

ADD 690 SQ. FT. FOR

OPTIONAL FINISHED BASEMENT



An optional Finished Basement offers the additional space to add luxurious home amenities such as a wine cellar or recreation/exercise room. It is also ideal for storage or an extra bathroom.