



ELEVATION A
 2451 SQ. FT.
 ADD 738 SQ. FT. FOR
 OPTIONAL FINISHED BASEMENT



ELEVATION B
 2434 SQ. FT.
 ADD 738 SQ. FT. FOR
 OPTIONAL FINISHED BASEMENT

ALL AREAS AND STATED ROOM DIMENSIONS ARE APPROXIMATE. SIZES AND SPECIFICATIONS ARE SUBJECT TO CHANGE WITHOUT NOTICE. ACTUAL USABLE FLOOR AREA MAY VARY FROM STATED FLOOR AREA. ALL RENDERINGS AND HOME SITINGS ARE ARTIST'S IMPRESSIONS. E. & O. E. 36-3



trailways
 STOUFFVILLE

THE ASBURY
 36' COLLECTION

ELEVATION A	ELEVATION B
2451 SQ. FT.	2434 SQ. FT.
ADD 738 SQ. FT. FOR	ADD 738 SQ. FT. FOR
OPTIONAL FINISHED BASEMENT	OPTIONAL FINISHED BASEMENT



ELEVATION A

2451 SQ. FT.

ADD 738 SQ. FT. FOR

OPTIONAL FINISHED BASEMENT

ELEVATION B

2434 SQ. FT.

ADD 738 SQ. FT. FOR

OPTIONAL FINISHED BASEMENT

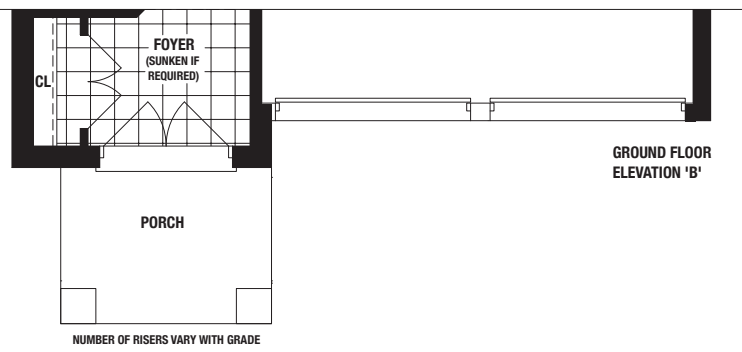
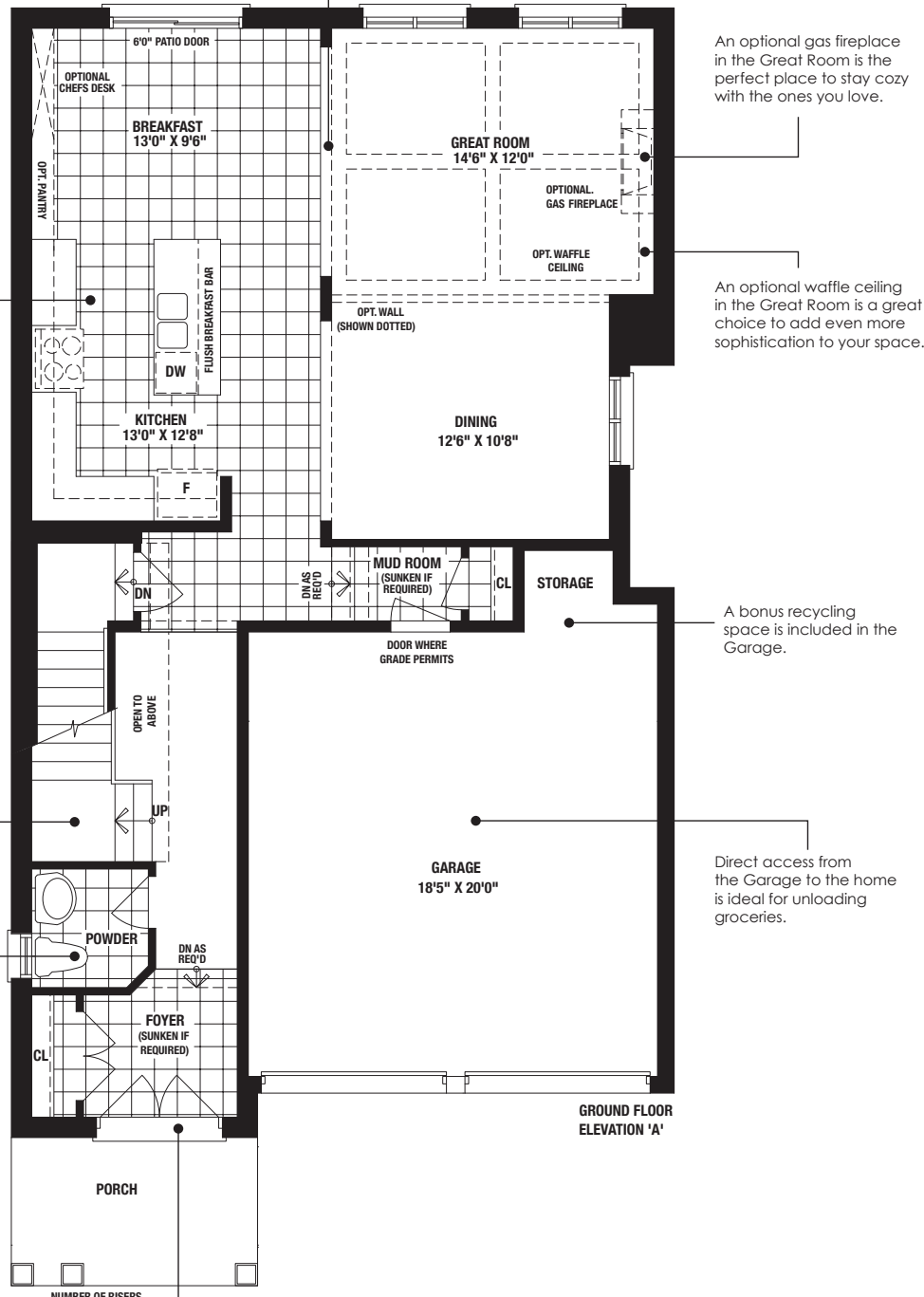
Our chef-inspired Kitchens have been designed for those who love spending time cooking and entertaining.

This open-concept ground floor plan provides a beautiful view of the Great Room from the Kitchen/Breakfast/Dining area.

Beautifully constructed and thoughtfully located in the heart of the home, the designed for living staircase allows easy access where you need it, connecting the levels of the home in a seamless, convenient manner.

A Powder Room on the ground floor is well positioned for easy access by your family.

A grand front entry with double doors and a large porch creates the perfect point of introduction to your family home.



The lavish Master Ensuite includes double sinks, a freestanding tub & a private water closet.

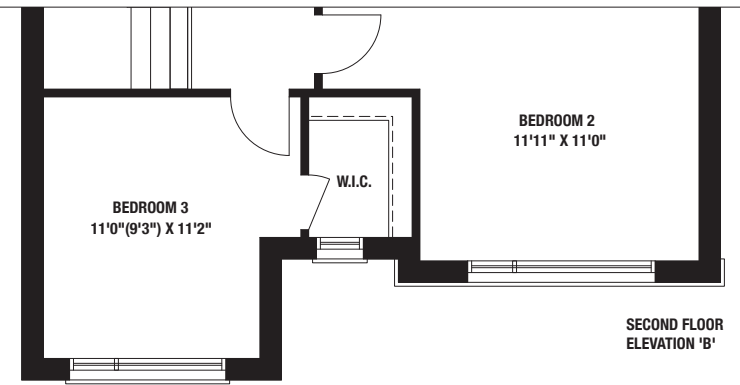
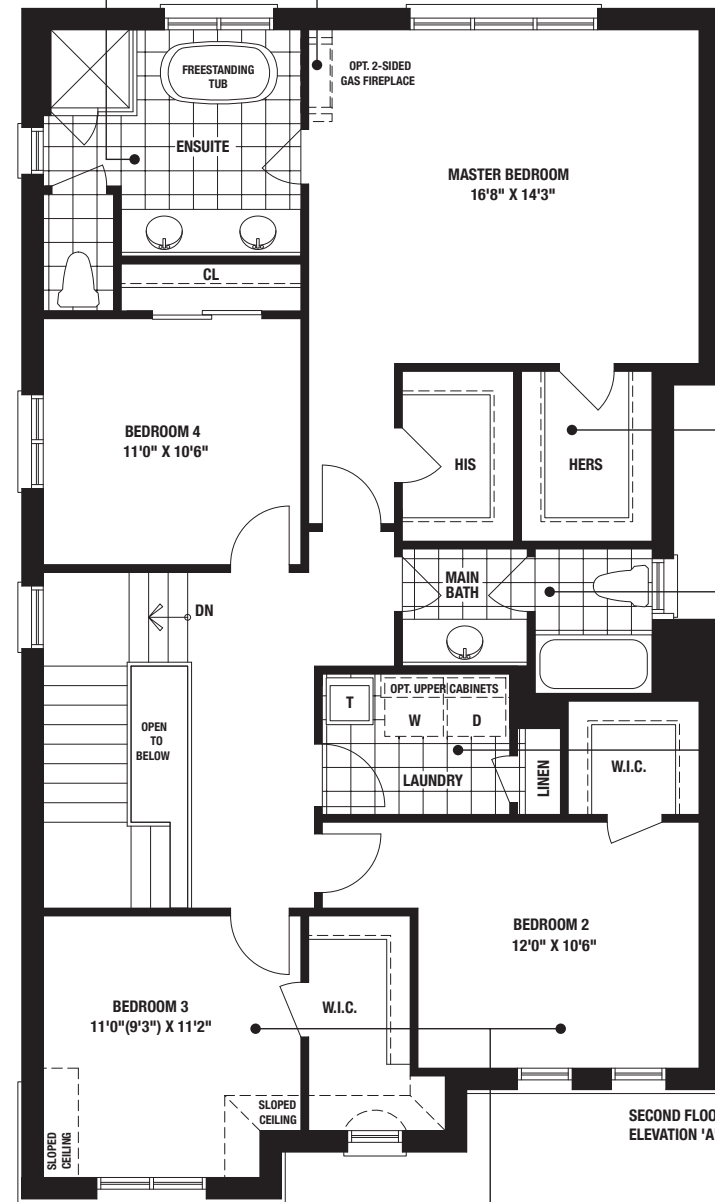
An optional fireplace in the Master Bedroom can create a cozy atmosphere for those chilly fall and winter days.

His and Hers walk-in closets are just one of the elevated features available in this beautiful Master Suite.

The Main Bathroom includes a private toilet area, allowing for others to use the sink area at the same time.

An Upstairs Laundry makes life a little easier for families that are always on the go.

Large Secondary Bedrooms with ample closet space are perfect for your growing family's needs.



An optional Finished Basement offers the additional space to add luxurious home amenities such as a wine cellar or recreation/exercise room. It is also ideal for storage or an extra bathroom.

