



ELEVATION A
 2560 SQ. FT.
 ADD 687 SQ. FT. FOR
 OPTIONAL FINISHED BASEMENT

ELEVATION B
 2560 SQ. FT.
 ADD 687 SQ. FT. FOR
 OPTIONAL FINISHED BASEMENT

ALL AREAS AND STATED ROOM DIMENSIONS ARE APPROXIMATE. SIZES AND SPECIFICATIONS ARE SUBJECT TO CHANGE WITHOUT NOTICE. ACTUAL USABLE FLOOR AREA MAY VARY FROM STATED FLOOR AREA. ALL RENDERINGS AND HOME SITINGS ARE ARTIST'S IMPRESSIONS. E. & O. E. 364



trailways
 STOUFFVILLE

THE LOGAN
 36' COLLECTION

ELEVATION A
 2560 SQ. FT.
 ADD 687 SQ. FT. FOR
 OPTIONAL FINISHED BASEMENT

ELEVATION B
 2560 SQ. FT.
 ADD 687 SQ. FT. FOR
 OPTIONAL FINISHED BASEMENT



ELEVATION A

2560 SQ. FT.

ADD 687 SQ. FT. FOR

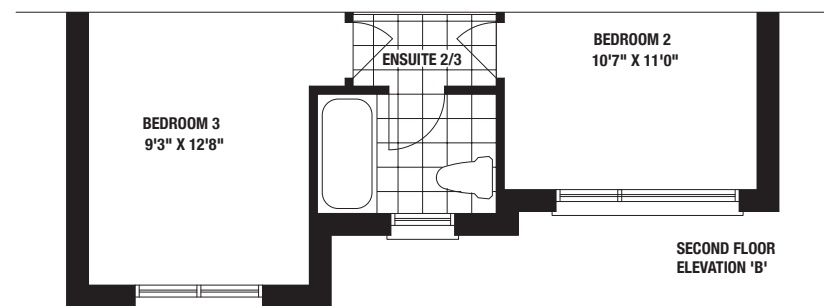
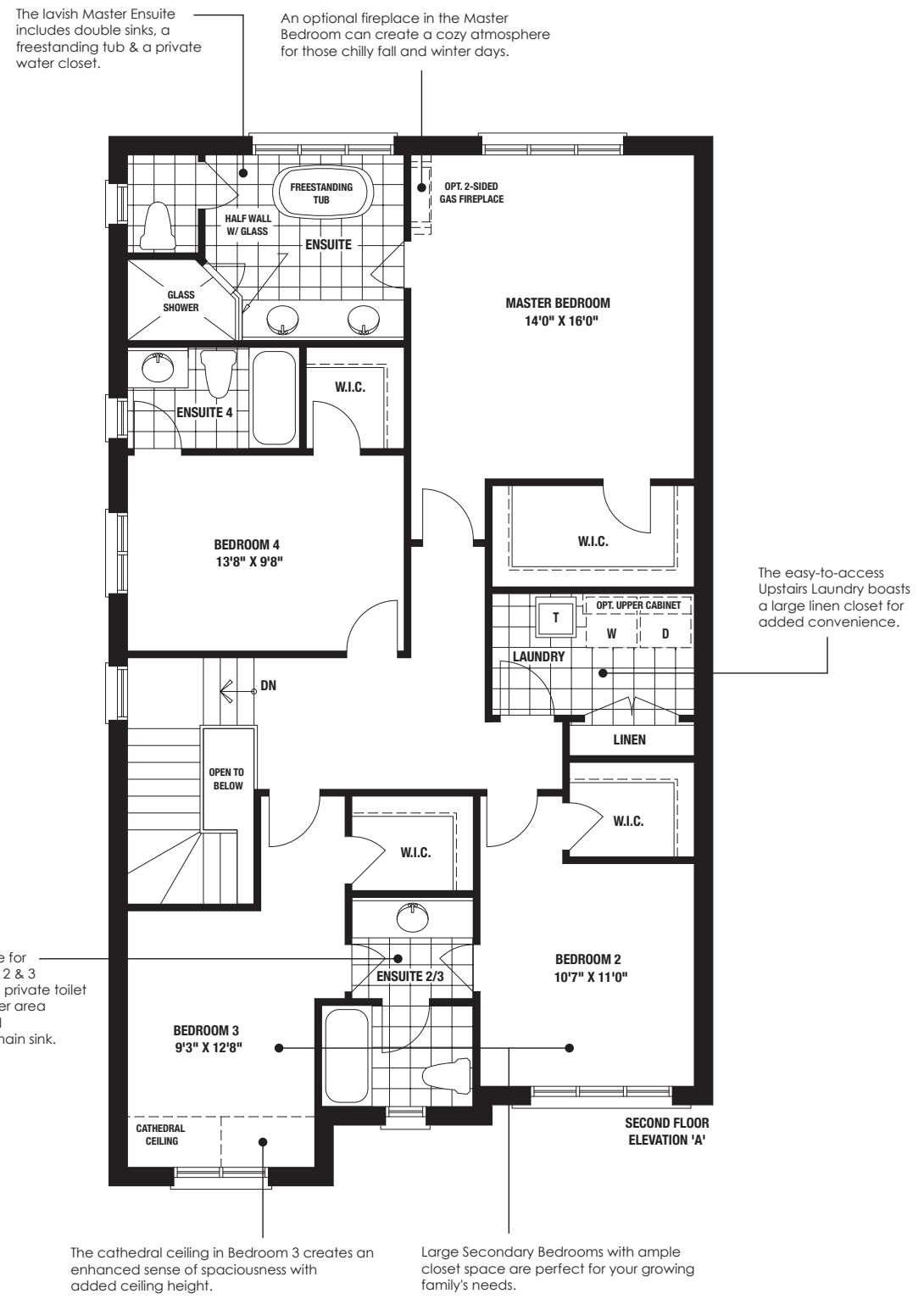
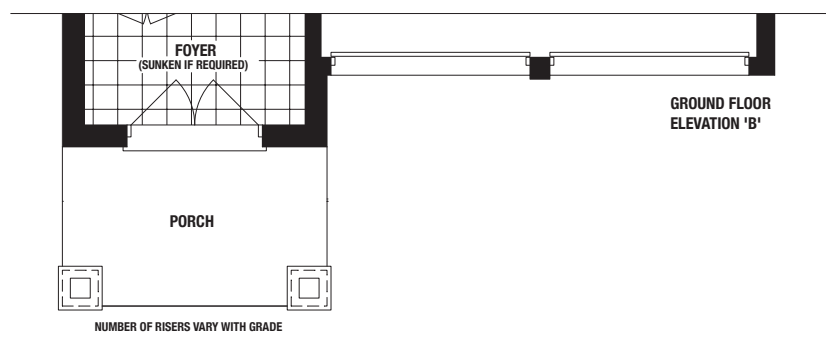
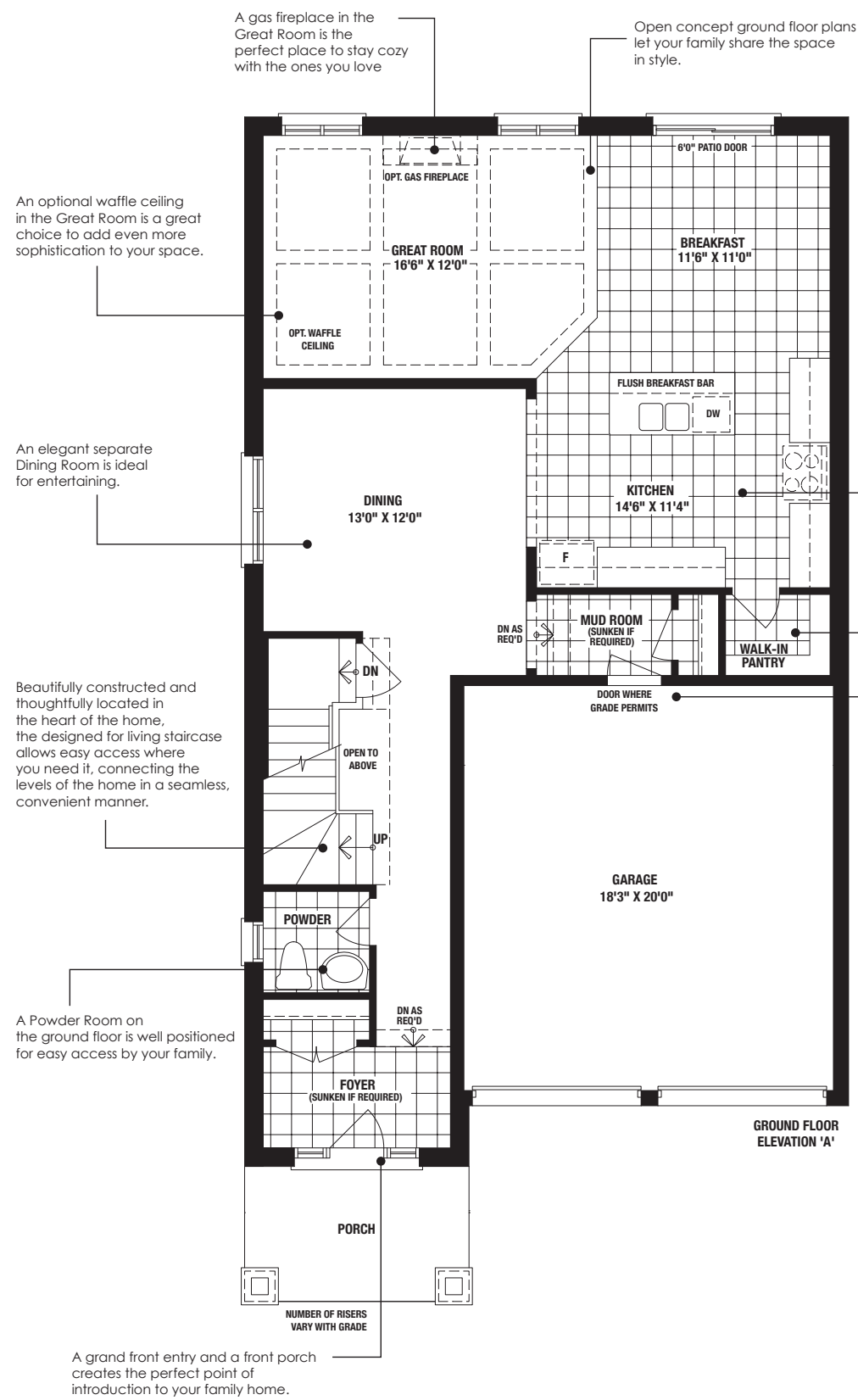
OPTIONAL FINISHED BASEMENT

ELEVATION B

2560 SQ. FT.

ADD 687 SQ. FT. FOR

OPTIONAL FINISHED BASEMENT



An optional Finished Basement offers the additional space to add luxurious home amenities such as a wine cellar or recreation/exercise room. It is also ideal for storage or an extra bathroom.

All your storage space needs will be covered with room to spare in this large Unfinished Basement.

