



ELEVATION A
 2295 SQ. FT.
 ADD 678 SQ. FT. FOR
 OPTIONAL FINISHED BASEMENT



ELEVATION B
 2275 SQ. FT.
 ADD 690 SQ. FT. FOR
 OPTIONAL FINISHED BASEMENT

ALL AREAS AND STATED ROOM DIMENSIONS ARE APPROXIMATE. SIZES AND SPECIFICATIONS ARE SUBJECT TO CHANGE WITHOUT NOTICE. ACTUAL USABLE FLOOR AREA MAY VARY FROM STATED FLOOR AREA. ALL RENDERINGS AND HOME SITINGS ARE ARTIST'S IMPRESSIONS. E. & O. E. 365C



trailways
 STOUFFVILLE

THE MAYTREE
 36' COLLECTION

ELEVATION A	ELEVATION B
2295 SQ. FT.	2275 SQ. FT.
ADD 678 SQ. FT. FOR OPTIONAL FINISHED BASEMENT	ADD 690 SQ. FT. FOR OPTIONAL FINISHED BASEMENT



ELEVATION A

2295 SQ. FT.

ADD 678 SQ. FT. FOR

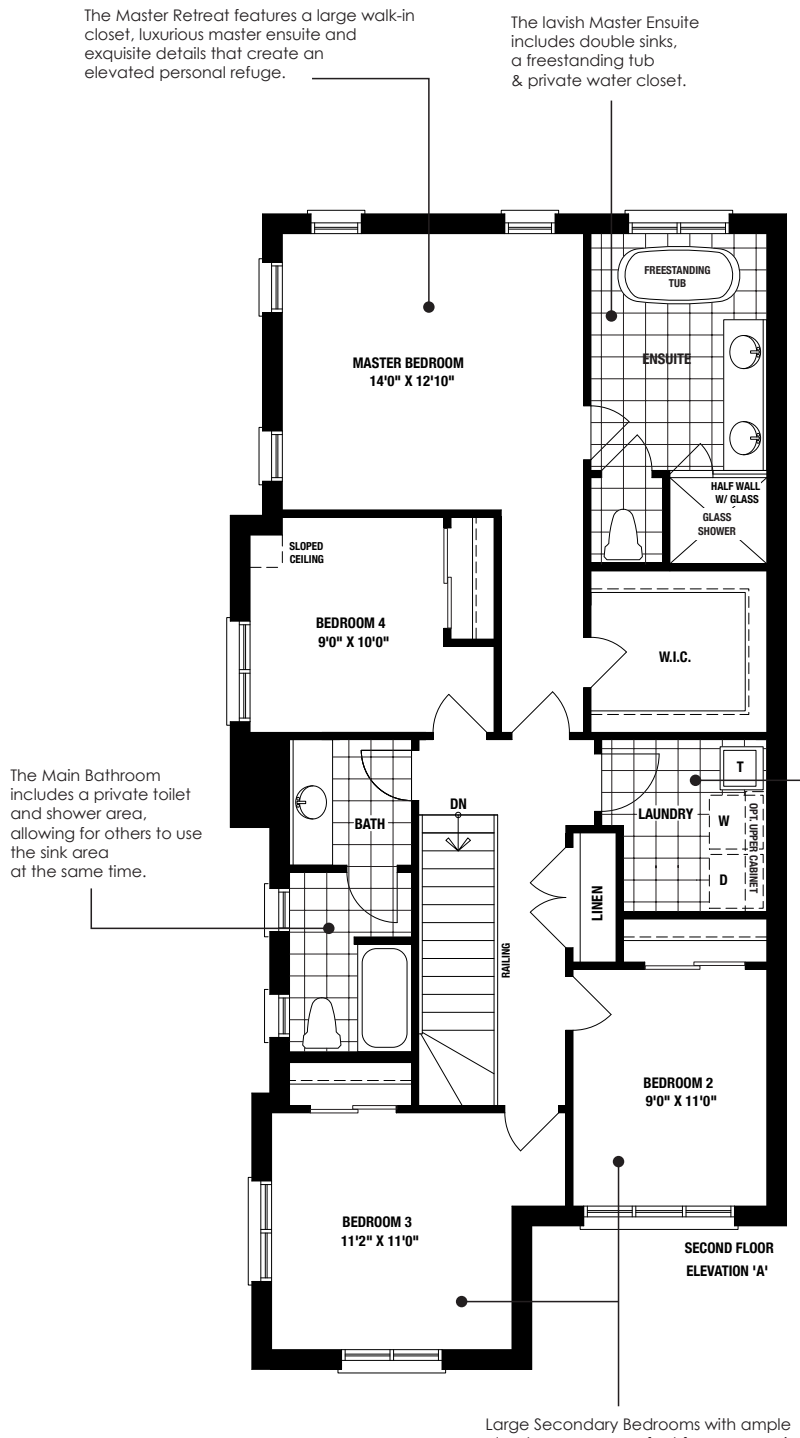
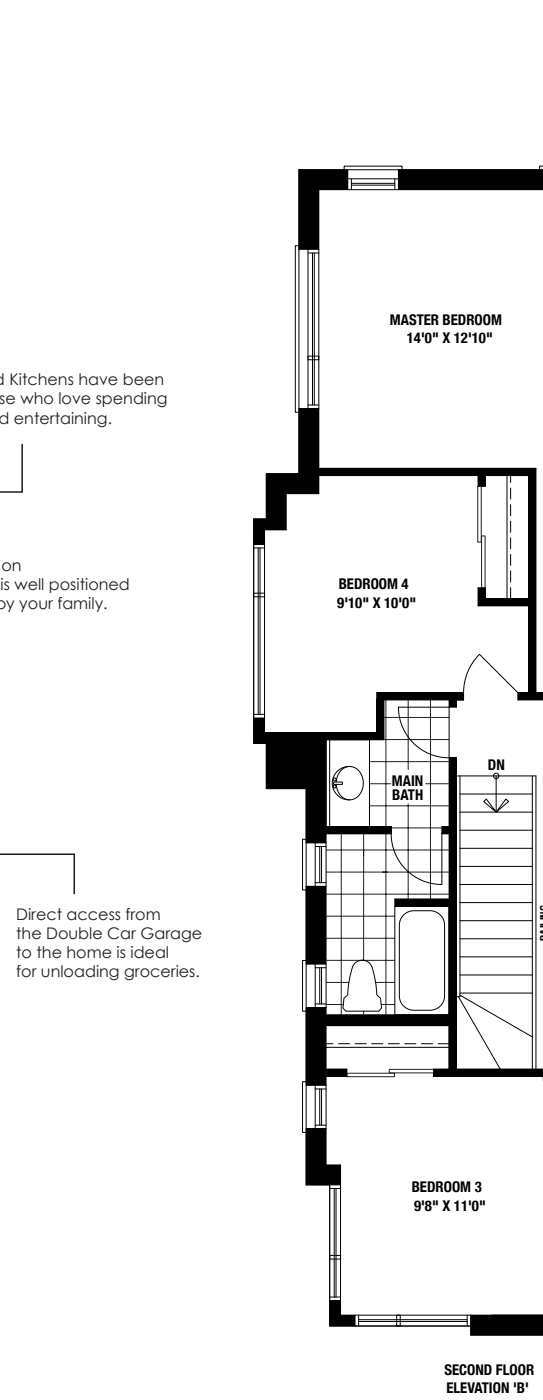
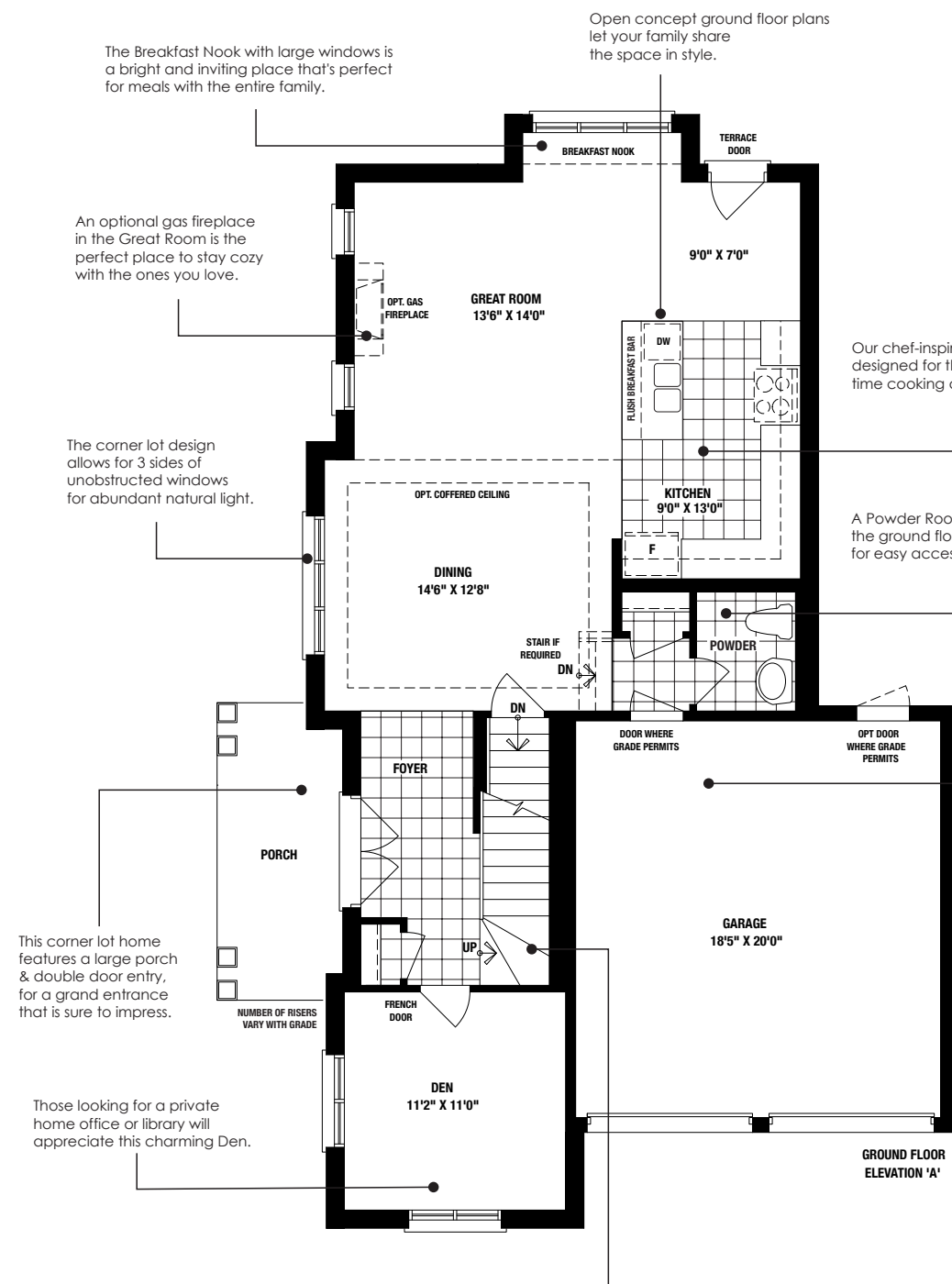
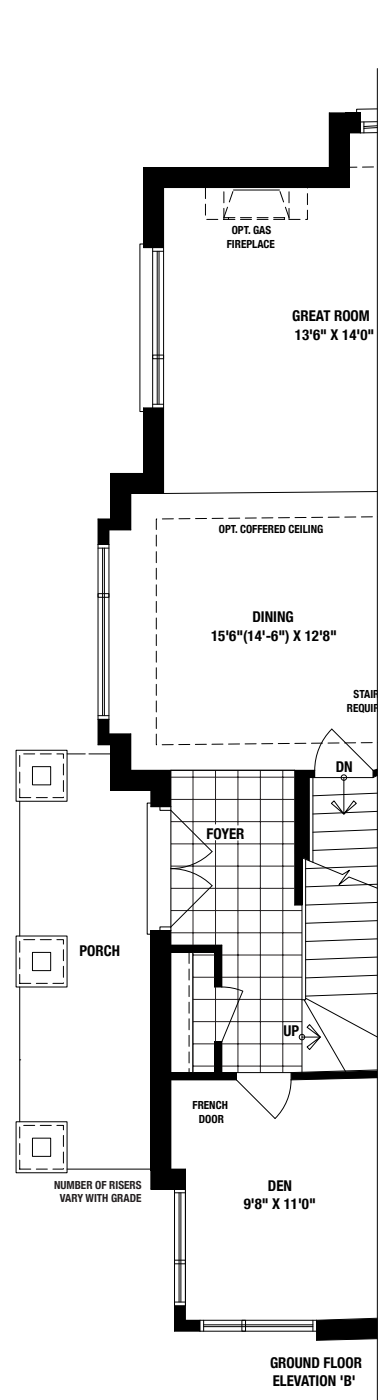
OPTIONAL FINISHED BASEMENT

ELEVATION B

2275 SQ. FT.

ADD 690 SQ. FT. FOR

OPTIONAL FINISHED BASEMENT



The Breakfast Nook with large windows is a bright and inviting place that's perfect for meals with the entire family.

Open concept ground floor plans let your family share the space in style.

An optional gas fireplace in the Great Room is the perfect place to stay cozy with the ones you love.

The corner lot design allows for 3 sides of unobstructed windows for abundant natural light.

Our chef-inspired Kitchens have been designed for those who love spending time cooking and entertaining.

A Powder Room on the ground floor is well positioned for easy access by your family.

This corner lot home features a large porch & double door entry, for a grand entrance that is sure to impress.

Those looking for a private home office or library will appreciate this charming Den.

Direct access from the Double Car Garage to the home is ideal for unloading groceries.

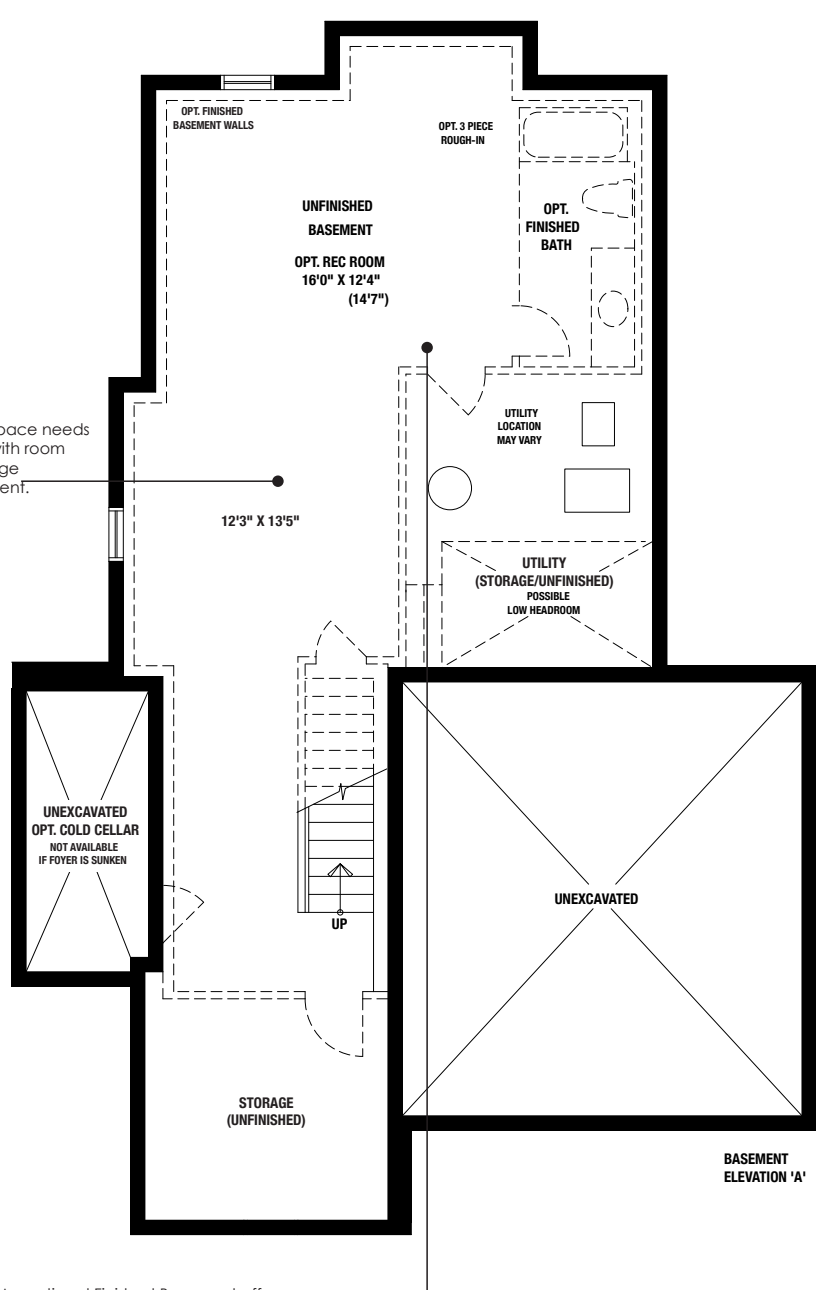
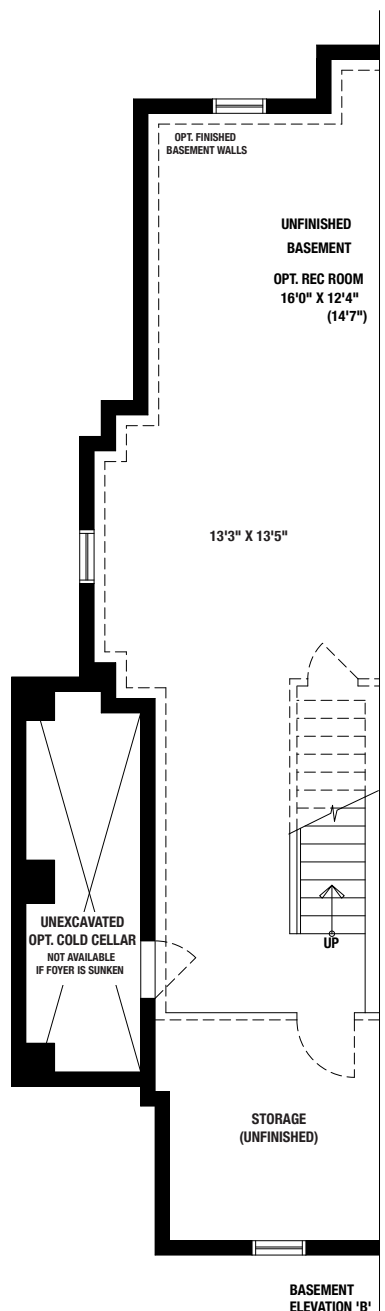
The Main Bathroom includes a private toilet and shower area, allowing for others to use the sink area at the same time.

The lavish Master Ensuite includes double sinks, a freestanding tub & private water closet.

An Upstairs Laundry makes life a little easier for families that are always on the go.

Beautifully constructed and thoughtfully located in the heart of the home, the designed for living staircase allows easy access where you need it, connecting the levels of the home in a seamless, convenient manner.

Large Secondary Bedrooms with ample closet space are perfect for your growing family's needs.



All your storage space needs will be covered with room to spare in this large Unfinished Basement.

An optional Finished Basement offers the additional space to add luxurious home amenities such as a wine cellar or recreation/exercise room. It is also ideal for storage or an extra bathroom.