



**ELEVATION A**  
 2638 SQ. FT.  
 ADD 666 SQ. FT. FOR  
 OPTIONAL FINISHED BASEMENT

**ELEVATION B**  
 2646 SQ. FT.  
 ADD 666 SQ. FT. FOR  
 OPTIONAL FINISHED BASEMENT

ALL AREAS AND STATED ROOM DIMENSIONS ARE APPROXIMATE. SIZES AND SPECIFICATIONS ARE SUBJECT TO CHANGE WITHOUT NOTICE. ACTUAL USABLE FLOOR AREA MAY VARY FROM STATED FLOOR AREA. ALL RENDERINGS AND HOME SITINGS ARE ARTIST'S IMPRESSIONS. E. & O. E. 405



**trailways**  
 STOUFFVILLE

**THE WATSON**  
 40' COLLECTION

**ELEVATION A**  
 2638 SQ. FT.  
 ADD 666 SQ. FT. FOR  
 OPTIONAL FINISHED BASEMENT

**ELEVATION B**  
 2646 SQ. FT.  
 ADD 666 SQ. FT. FOR  
 OPTIONAL FINISHED BASEMENT



ELEVATION A

2638 SQ. FT.

ADD 666 SQ. FT. FOR

OPTIONAL FINISHED BASEMENT

ELEVATION B

2646 SQ. FT.

ADD 666 SQ. FT. FOR

OPTIONAL FINISHED BASEMENT

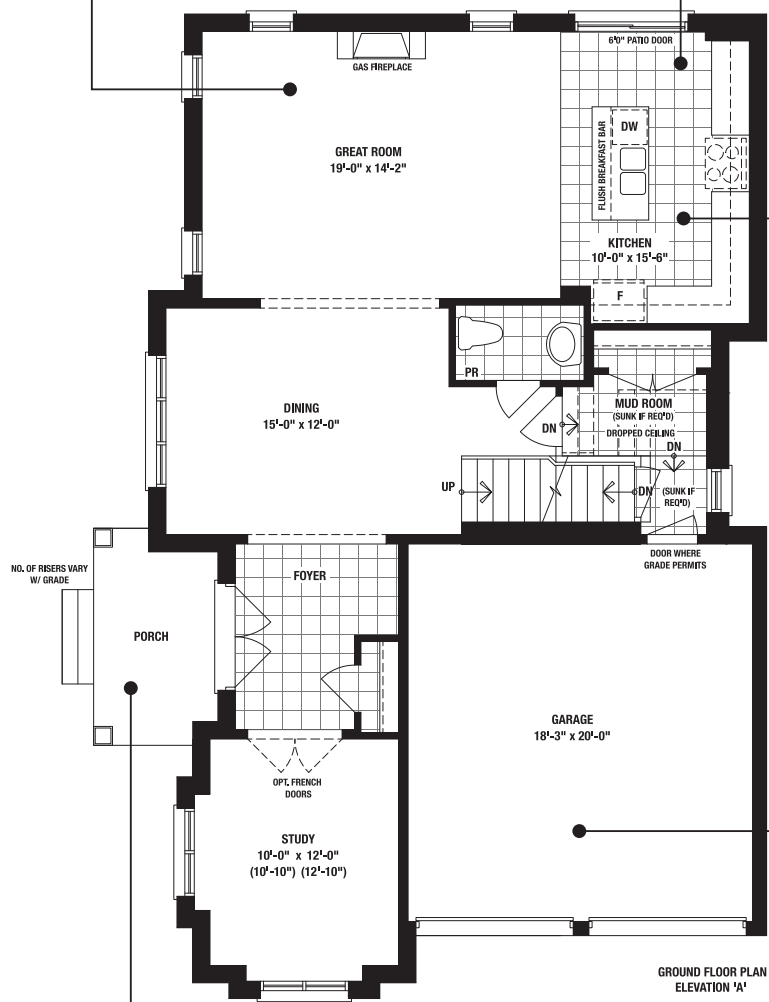
Looking for the perfect space to spend time with the family? Look no further than this large yet cozy great room. Well-sized windows and a gas fireplace make this a welcoming space to hang out day or night.

The open concept kitchen has direct access to the backyard through sliding patio doors. Perfect for BBQs!

Find the intimate retreat of your dreams in this beautiful master suite. The large walk-in closet is enough space for even the biggest wardrobes. Your master bedroom is thoughtfully nestled away from the busier parts of the house, so you can always have plenty of peace and quiet.

The soaker tub in this ensuite is so big you'll practically feel like you can dive in. The frameless glass shower will leave you feeling refreshed after a long day at the office. Dual sinks let you both start your morning routine without being in the way.

Consider adding the optional recreation room and optional 3 piece bath to create the perfect guest bedroom or play space for your family.



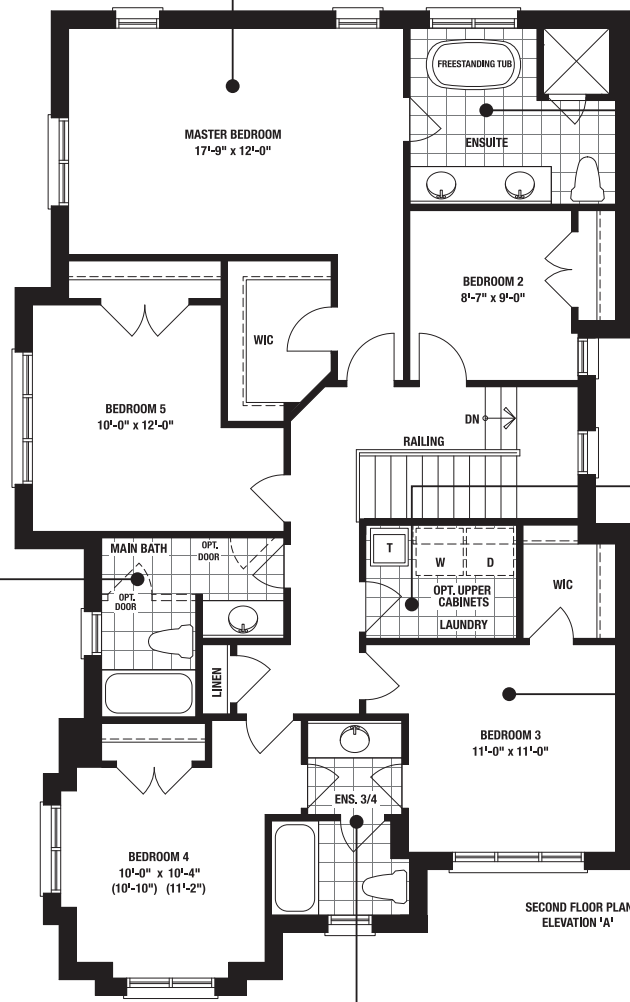
You'll have plenty of room to entertain and cook in this lavish open concept kitchen. It includes a large island with a flush breakfast bar, and abundant counter space.

The main bath offers an optional privacy door to allow the sink area to remain open for the whole family to use.

Enjoy direct garage access into the home via a conveniently placed mudroom.

This home features a beautiful side entry. It makes the porch a more secluded place to lounge with the family, and creates a more streamlined elevation along the front of the home.

The shared ensuite between bedrooms 3 and 4 has a privacy door between the bath and sink area, so 2 family members can use the bathroom at the same time!



The convenient upstairs laundry makes it easy to keep up on the chores, unfortunately it still won't help kids learn to use the hamper.

Bedroom 3 includes a large walk-in closet and access to a shared ensuite.

