

ELEVATION A



THE SULLIVAN
A2 REV

THE SULLIVAN
A1

THE SULLIVAN
A1 REV

THE SULLIVAN
A2

ELEVATION B



THE SULLIVAN
B2 REV

THE SULLIVAN
B1

THE SULLIVAN
B1 REV

THE SULLIVAN
B2

THE ABOVE RENDERINGS REPRESENT A TYPICAL TOWNHOME BLOCK. ACTUAL BLOCK DESIGNS VARY BASED ON TOWNHOME COUNT AND DEPTH OF LOTS. ALL AREAS AND STATED ROOM DIMENSIONS ARE APPROXIMATE. SIZES AND SPECIFICATIONS ARE SUBJECT TO CHANGE WITHOUT NOTICE. ACTUAL USABLE FLOOR AREA MAY VARY FROM STATED FLOOR AREA. ALL RENDERINGS AND HOME SITINGS ARE ARTIST'S IMPRESSIONS. E. & O. E. '15

trailways
STOUFFVILLE

THE SULLIVAN
TOWNHOME COLLECTION

ELEVATION A1/A2

1635 / 1622 SQ. FT.

ADD 345 SQ. FT. FOR

OPTIONAL FINISHED BASEMENT

ELEVATION B1/B2

1645 / 1610 SQ. FT.

ADD 345 SQ. FT. FOR

OPTIONAL FINISHED BASEMENT



ELEVATION A1 / A2

1635 / 1622 SQ. FT.

ADD 345 SQ. FT. FOR

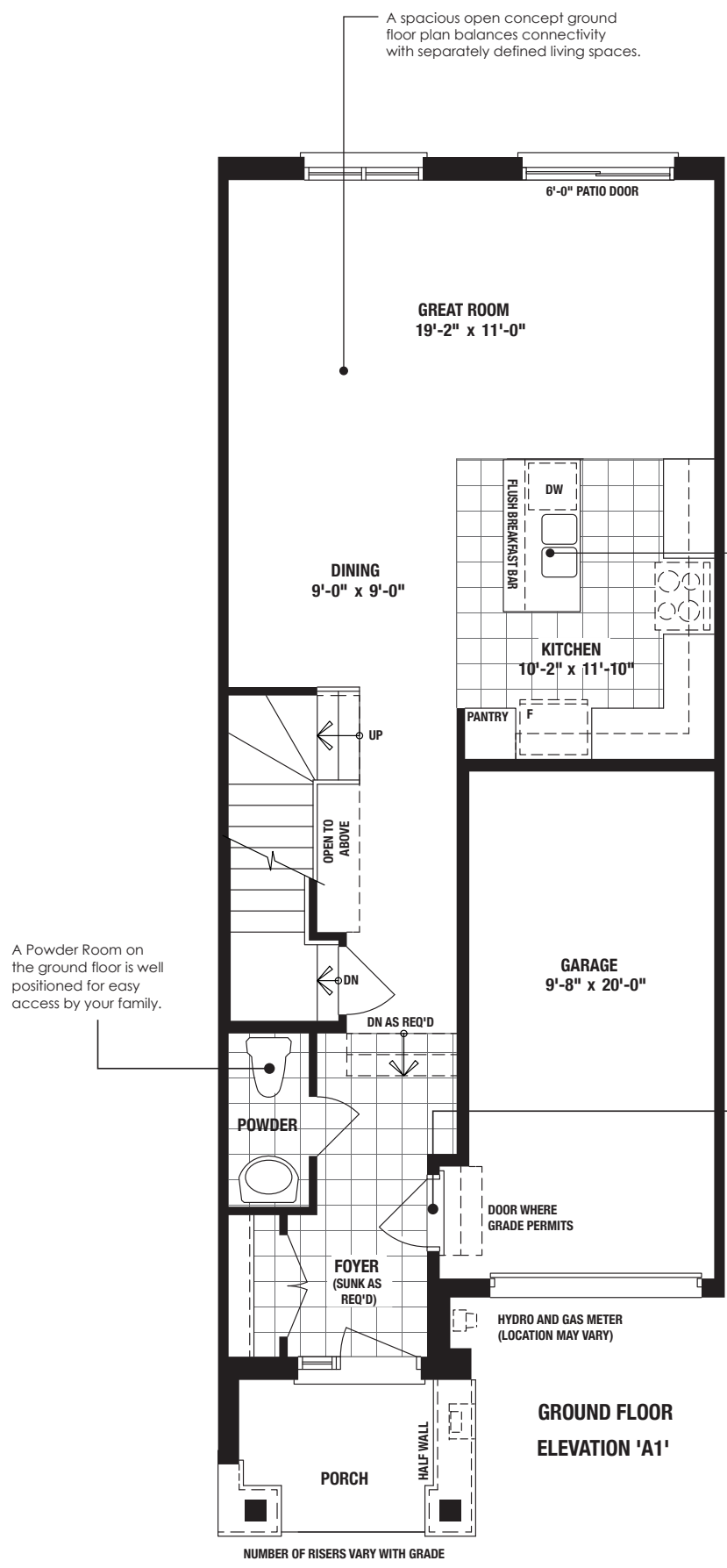
OPTIONAL FINISHED BASEMENT

ELEVATION B1 / B2

1645 / 1610 SQ. FT.

ADD 345 SQ. FT. FOR

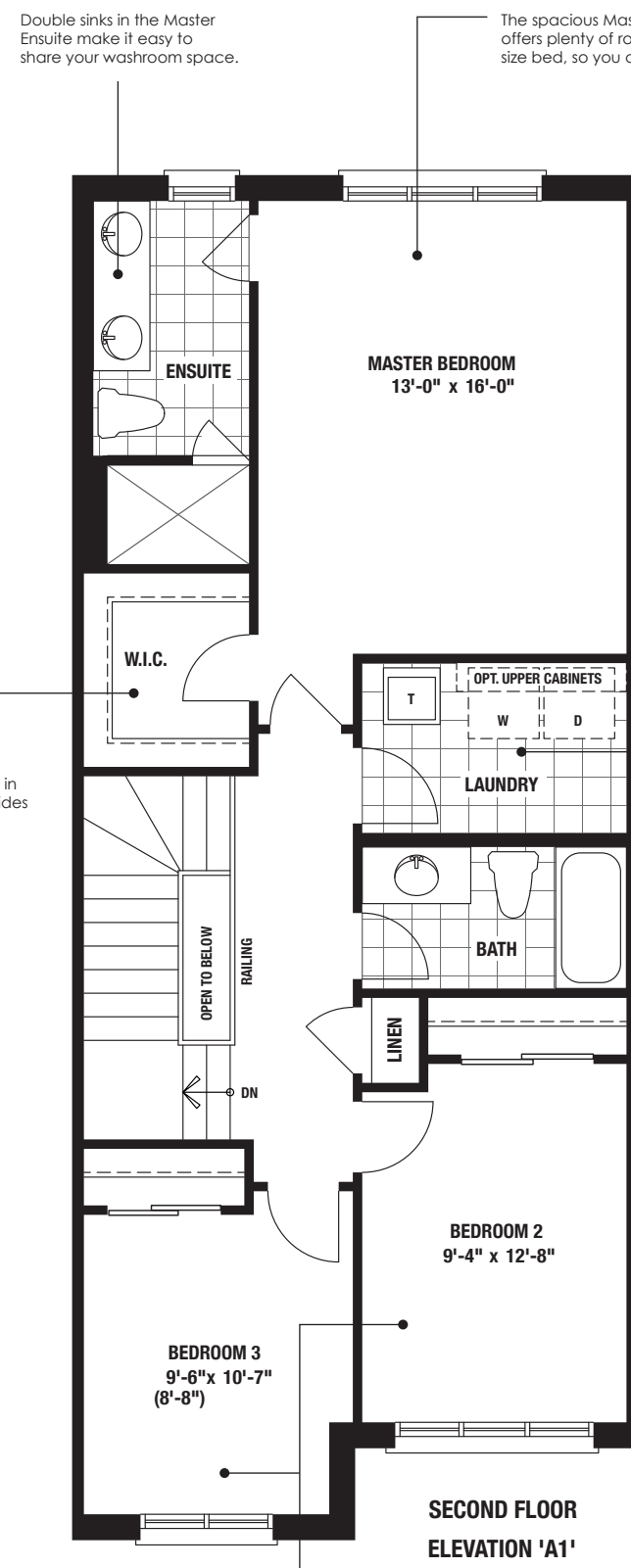
OPTIONAL FINISHED BASEMENT



The flush Breakfast Bar is the ultimate family-friendly gathering space in the beautiful designer kitchen.

Direct access from the Garage to the home is ideal for unloading groceries.

A Powder Room on the ground floor is well positioned for easy access by your family.



An optional Recreation Room in the basement is a great way to add more space for your family.

A convenient Upstairs Laundry is a must-have for busy families.

A large walk-in closet in the Master Suite provides ample space for two.

Spacious Secondary Bedrooms offer room to grow for everyone in your home.

