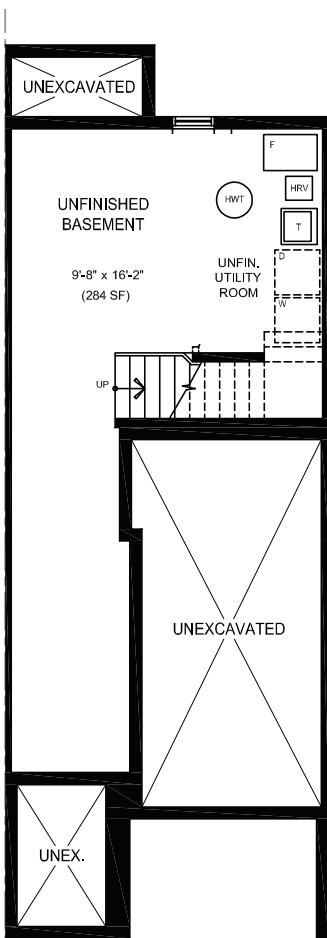
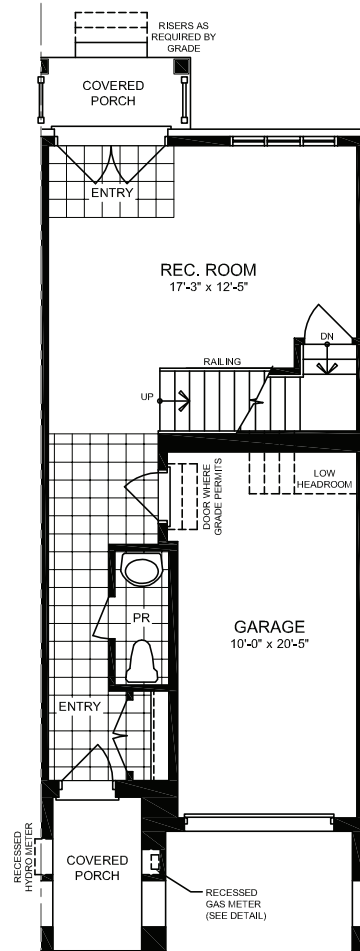


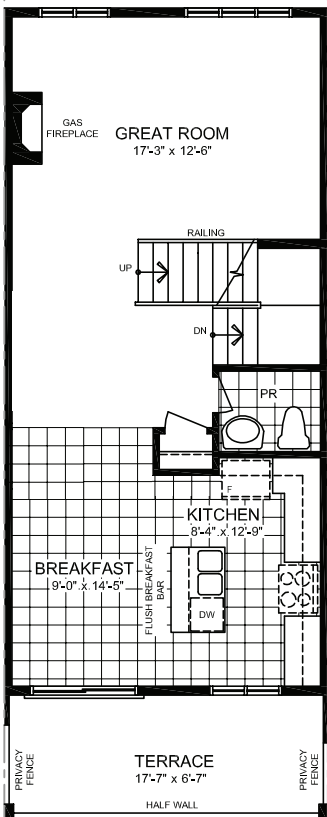
6 Westbury Way • 1893 Sq. Ft. • 3 Bed & 2 Full Bath & 2 Half Baths



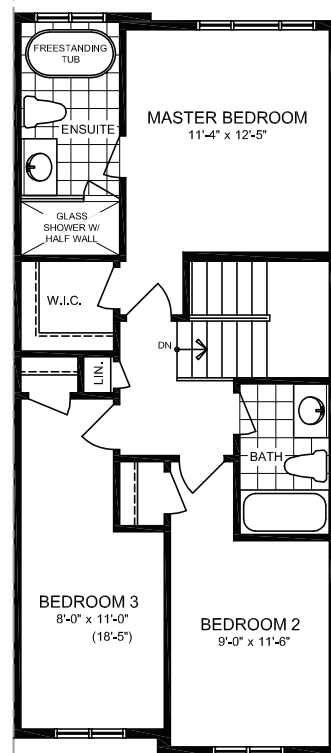
BASEMENT LEVEL



GROUND LEVEL



MAIN LEVEL



UPPER LEVEL

Select Features

- 9' ceilings on Main Level, 8' on Ground and Upper Level
- Engineered hardwood flooring on Main Level (except in tiled areas)
- Oak stairs from Ground Level to Main Level and Main Level to Upper Level
- Gas fireplace on Main Level
- Upgraded custom designed kitchen with furniture finish kitchen cabinets
- Granite countertops in the Kitchen
- Freestanding tub in Master Ensuite
- 2-car parking (1 in garage and 1 in driveway)
- Tarion New Home Warranty

Upgraded Features

- Appliances included throughout (Refrigerator, stove, dishwasher, washer, dryer)
- Upgraded floor tile in Kitchen
- Upgraded floor tile in Master Ensuite
- Upgraded floor tile in Main Floor Powder Room
- Engineered hardwood flooring in Recreation Room on Ground Level
- Waterline to fridge
- Stained staircase
- White quartz shower threshold in Master Ensuite

Community Features

- Minutes to downtown Brooklin and retail shopping destinations
- 3 minutes to HWY 407 and 10 minutes to the HWY 412 with connection to HWY 401
- Walking distance to the local High School and Public School
- Walking distance to two local parks

SORBARA
group of companies